

SCN2B Rabbit pAb

货号: **AYP16229**

产品信息

反应	Human
宿主	Rabbit
克隆性	Polyclonal
预测反应	
应用	WB
推荐浓度	WB: 1:500 - 1:2000
理论分子量	24kDa
实测分子量	24kDa
形式	Liquid
保存条件	Store at -20°C. Avoid freeze / thaw cycles. Buffer: PBS with 0.02% sodium azide,50% glycerol,pH7.3.
偶联物	Unconjugated
阳性对照	SW620,HepG2
细胞定位	Membrane,Single-pass type I membrane protein
纯化	Affinity purification

抗原信息

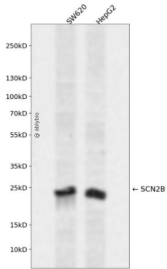
抗原信息	Recombinant fusion protein containing a sequence corresponding to amino acids 30-160 of human SCN2B (NP_004579.1).
序列	MEVTPATLNLVNGSDARLPCTFNHCYTVNHKQFSLNWTYQECNNCSEEMFLQFRMKIINLKLRFQDRVEFSGNPSKYD VSVMRLRNVPEDDEGIYNCYIMNPPDRHRGHGKIHLQVLMEEPPERDSTVAV

靶点信息

研究背景	The protein encoded by this gene is the beta 2 subunit of the type II voltage-gated sodium channel. The encoded protein is involved in cell-cell adhesion and cell migration. Defects in this gene can be a cause of Brugada Syndrome, atrial fibrillation, or sudden infant death syndrome.
基因ID	6327

基因名	SCN2B
Swiss	O60939
别名	SCN2B;ATFB14

产品验证



Western blot analysis of SCN2B expressed in SW620, HepG2 using SCN2B Rabbit pAb at 1:1000. Secondary antibody: HRP Goat Anti-Rabbit IgG (H+L) at 1:5000. Lysates/proteins: 30ug per lane. Blocking buffer: 5% non-fat dry milk in TBST. Detection: ECL Enhanced Kit. Exposure time: 120s.

实验步骤

访问官网浏览详情: www.ablybio.cn