

SLC4A2 Rabbit pAb

货号: **AYP16226**

产品信息

反应	Human
宿主	Rabbit
克隆性	Polyclonal
预测反应	
应用	WB
推荐浓度	WB: 1:500 - 1:2000
理论分子量	135kDa/136kDa/137kDa
实测分子量	140kDa
形式	Liquid
保存条件	Store at -20°C. Avoid freeze / thaw cycles. Buffer: PBS with 0.01% thiomersal,50% glycerol,pH7.3.
偶联物	Unconjugated
阳性对照	HeLa,A-549,Jurkat,HT-29
细胞定位	Membrane,Multi-pass membrane protein
纯化	Affinity purification

抗原信息

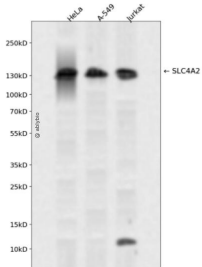
抗原信息	Recombinant fusion protein containing a sequence corresponding to amino acids 200-300 of human SLC4A2 (NP_001186623.1).
序列	DDGGASGRPLPKAQPGHRSYNLQERRRIGSMTGAEQALLPRVPTDEIEAQLATADLDLMKSHRFEDVPGVRRHLVRKN AKGSTQSGREGREPGTPRARP

靶点信息

研究背景	This gene encodes a member of the anion exchanger family of membrane transport proteins. The encoded protein regulates intracellular pH, biliary bicarbonate secretion, and chloride uptake. Reduced expression of this gene may be associated with primary biliary cirrhosis (PBC) in human patients, while differential expression of this gene may be associated with malignant hepatocellular carcinoma, colon and gastric cancers.
基因ID	6522

基因名	SLC4A2
Swiss	P04920
别名	SLC4A2;AE2;BND3L;EPB3L1;HKB3;NBND3

产品验证



Western blot analysis of SLC4A2 expressed in HeLa,A-549,Jurkat using SLC4A2 Rabbit pAb at 1:1000. Secondary antibody: HRP Goat Anti-Rabbit IgG (H+L) at 1:5000. Lysates/proteins: 30ug per lane. Blocking buffer: 5% non-fat dry milk in TBST. Detection: ECL Enhanced Kit. Exposure time: 120s.

实验步骤

访问官网浏览详情: www.ablybio.cn