

UBE2A Rabbit pAb

货号: AYP16220

产品信息

反应	Human,Mouse,Rat
宿主	Rabbit
克隆性	Polyclonal
预测反应	
应用	WB IHC
推荐浓度	WB: 1:500 - 1:2000 IHC: 1:50 - 1:100
理论分子量	8kDa/13kDa/17kDa
实测分子量	14kDa
形式	Liquid
保存条件	Store at -20°C. Avoid freeze / thaw cycles. Buffer: PBS with 0.02% sodium azide,50% glycerol,pH7.3.
偶联物	Unconjugated
阳性对照	A375,SW620
细胞定位	cytosol,nucleoplasm
纯化	Affinity purification

抗原信息

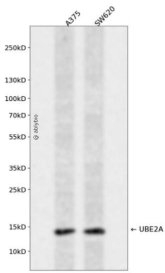
抗原信息	Recombinant fusion protein containing a sequence corresponding to amino acids 1-152 of human UBE2A (NP_003327.2).
序列	MSTPARRRLMRDFKRLQEDPPAGVSGAPSENNIMVWNAVIFGPEGTPFEDGTFKLTIEFTEEYPNKPPTVRFVSKMFHPNV YADGSICLDILQNRWSPTYDVSSILTSIQSLLEPNPNPANSQAAQLYQENKREYKRVSAIVEQSWRDC

靶点信息

研究背景	The modification of proteins with ubiquitin is an important cellular mechanism for targeting abnormal or short-lived proteins for degradation. Ubiquitination involves at least three classes of enzymes: ubiquitin-activating enzymes, ubiquitin-conjugating enzymes, and ubiquitin-protein ligases. This gene encodes a member of the E2 ubiquitin-conjugating enzyme family. This enzyme is required for post-replicative DNA damage repair, and may play a role in transcriptional regulation. Mutations in this gene are associated with mental retardation. Alternative splicing results in multiple transcript variants.
------	---

基因ID	7319
基因名	UBE2A
Swiss	P49459
别名	UBE2A;HHR6A;MRXS30;MRXSN;RAD6A;UBC2

产品验证



Western blot analysis of UBE2A expressed in A375,SW620 using UBE2A Rabbit pAb at 1:1000. Secondary antibody: HRP Goat Anti-Rabbit IgG (H+L) at 1:5000. Lysates/proteins: 30ug per lane. Blocking buffer: 5 % non-fat dry milk in TBST. Detection: ECL Enhanced Kit. Exposure time: 120s.

实验步骤

访问官网浏览详情: www.ablybio.cn