

— ABLYBIO, Help Your Research



ADAM15 Rabbit pAb

货号: **AYP16215**

产品信息

反应	Human,Mouse,Rat
宿主	Rabbit
克隆性	Polyclonal
预测反应	
应用	WB IF/ICC
推荐浓度	WB: 1:500 - 1:2000 IF/ICC: 1:50 - 1:200
理论分子量	55kDa/68kDa/83-92kDa
实测分子量	93kDa
形式	Liquid
保存条件	Store at -20°C. Avoid freeze / thaw cycles. Buffer: PBS with 0.02% sodium azide,50% glycerol,pH7.3.
偶联物	Unconjugated
阳性对照	Mouse heart,Mouse kidney,Mouse brain
细胞定位	Cell junction,Cell projection,Cytoplasmic vesicle,Endomembrane system,Single-pass type I membrane protein,acrosome,adherens junction,cilium,flagellum,secretory vesicle
纯化	Affinity purification

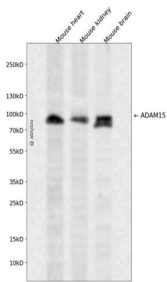
抗原信息

抗原信息	Recombinant fusion protein containing a sequence corresponding to amino acids 540-700 of human ADA M15 (NP_003806.3).
------	---

靶点信息

研究背景	The protein encoded by this gene is a member of the ADAM (a disintegrin and metalloproteinase) protein family. ADAM family members are type I transmembrane glycoproteins known to be involved in cell adhesion and proteolytic ectodomain processing of cytokines and adhesion molecules. This protein contains multiple functional domains including a zinc-binding metalloprotease domain, a disintegrin-like domain, as well as a EGF-like domain. Through its disintegrin-like domain, this protein specifically interacts with the integrin beta chain, beta 3. It also interacts with Src family protein-tyrosine kinases in a phosphorylation-dependent manner, suggesting that this protein may function in cell-cell adhesion as well as in cellular signaling. Multiple alternatively spliced transcript variants encoding distinct isoforms have been observed.
基因ID	8751
基因名	ADAM15
Swiss	Q13444 (https://www.uniprot.org/uniprotkb/Q13444/entry)
别名	ADAM15,MDC15,ADAM15 Rabbit pAb,Metalloprotease RGD disintegrin protein,Metalloproteinase-like,disintegrin-like,and cysteine-rich protein 15,Metargidin

产品验证



Western blot analysis of ADAM15 expressed in Mouse heart, Mouse kidney, Mouse brain using ADAM15 Rabbit pAb at 1:1000. Secondary antibody: HRP Goat Anti-Rabbit IgG (H+L) at 1:5000. Lysates/proteins: 30ug per lane. Blocking buffer: 5% non-fat dry milk in TBST. Detection: ECL Enhanced Kit. Exposure time: 120s.

实验步骤

访问官网浏览详情: www.ablybio.cn (<https://www.ablybio.cn/www.ablybio.cn>)