

CPLX2 Rabbit pAb

货号: **AYP16207**

产品信息

反应	Human,Mouse,Rat
宿主	Rabbit
克隆性	Polyclonal
预测反应	
应用	WB
推荐浓度	WB: 1:500 - 1:2000
理论分子量	15kDa
实测分子量	15kDa
形式	Liquid
保存条件	Store at -20°C. Avoid freeze / thaw cycles. Buffer: PBS with 0.02% sodium azide,50% glycerol,pH7.3.
偶联物	Unconjugated
阳性对照	SH-SY5Y,Mouse eye
细胞定位	Cytoplasm,cytosol
纯化	Affinity purification

抗原信息

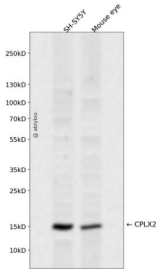
抗原信息	Recombinant fusion protein containing a sequence corresponding to amino acids 1-134 of human CPLX2 (NP_006641.1).
序列	MDFVMKQALGGATKDMGKMLGGEEEKDPDAQKKEERQEALRQQEEERKAKHARMEAREKVRQQIRDKYGLKKKEEKEAEEKAALQPCGSLTRPKKAIPAGCGDEEEEEESILDTVLKYLPGPLQDMFKK

靶点信息

研究背景	Proteins encoded by the complexin/synaphin gene family are cytosolic proteins that function in synaptic vesicle exocytosis. These proteins bind syntaxin, part of the SNAP receptor. The protein product of this gene binds to the SNAP receptor complex and disrupts it, allowing transmitter release. Two transcript variants encoding the same protein have been found for this gene.
基因ID	10814

基因名	CPLX2
Swiss	Q6PUV4
别名	CPLX2;921-L;CPX-2;CPX2;Hfb1

产品验证



Western blot analysis of CPLX2 expressed in SH-SY5Y, Mouse eye using CPLX2 Rabbit pAb at 1:1000. Secondary antibody: HRP Goat Anti-Rabbit IgG (H+L) at 1:5000. Lysates/proteins: 30ug per lane. Blocking buffer: 5% non-fat dry milk in TBST. Detection: ECL Enhanced Kit. Exposure time: 120s.

实验步骤

访问官网浏览详情: www.ablybio.cn