

WDR6 Rabbit pAb

货号: **AYP16206**

产品信息

反应	Human,Mouse
宿主	Rabbit
克隆性	Polyclonal
预测反应	
应用	WB IF/ICC
推荐浓度	WB: 1:500 - 1:1000 IF/ICC: 1:50 - 1:200
理论分子量	121kDa
实测分子量	122KDa
形式	Liquid
保存条件	Store at -20°C. Avoid freeze / thaw cycles. Buffer: PBS with 0.05% proclin300,50% glycerol,pH7.3.
偶联物	Unconjugated
阳性对照	SH-SY5Y
细胞定位	Cytoplasm
纯化	Affinity purification

抗原信息

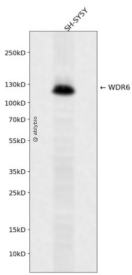
抗原信息	Recombinant fusion protein containing a sequence corresponding to amino acids 800-1000 of human WD R6 (NP_060501.3).
序列	VCNHISSVRAVAVWGIGTPGGPQDPQPGLTAHVVSAGGRAEMHCFSIMVTPDPSTPSRLACHVMHLSSHRLDEYWDRQ RNRHRMVKVDPETRYMSLAVCELDQPGLGPLVAAACSDGAVRLFLLQDSGRILQLLAETFHHKRCVLKVHSFTHEAPNQR RRLLLCSAATDGS LAFWDLT TMLDHDSTVLEPPVDPGLPYRLG

靶点信息

研究背景	This gene encodes a member of the WD repeat protein family. WD repeats are minimally conserved regions of approximately 40 amino acids typically bracketed by gly-his and trp-asp (GH-WD), which may facilitate formation of heterotrimeric or multiprotein complexes. The encoded protein interacts with serine/threonine kinase 11, and is implicated in cell growth arrest. Alternative splicing results in multiple transcript variants encoding different isoforms.
------	--

基因ID	11180
基因名	WDR6
Swiss	Q9NNW5
别名	WDR6

产品验证



Western blot analysis of WDR6 expressed in SH-SY5Y using WDR6 Rabbit pAb at 1:1000. Secondary antibody: HRP Goat Anti-Rabbit IgG (H+L) at 1:5000. Lysates/proteins: 30ug per lane. Blocking buffer: 5% non-fat dry milk in TBST. Detection: ECL Enhanced Kit. Exposure time: 120s.

实验步骤

访问官网浏览详情: www.ablybio.cn