

CBLC Rabbit pAb

货号: **AYP16203**

产品信息

反应	Human,Mouse
宿主	Rabbit
克隆性	Polyclonal
预测反应	
应用	WB
推荐浓度	WB: 1:500 - 1:2000
理论分子量	47kDa/52kDa
实测分子量	52kDa
形式	Liquid
保存条件	Store at -20°C. Avoid freeze / thaw cycles. Buffer: PBS with 0.02% sodium azide,50% glycerol,pH7.3.
偶联物	Unconjugated
阳性对照	293T,Raji,U-937,Mouse kidney
细胞定位	plasma membrane
纯化	Affinity purification

抗原信息

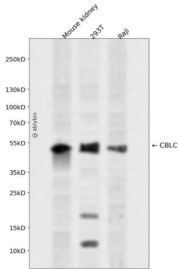
抗原信息	Recombinant fusion protein containing a sequence corresponding to amino acids 245-474 of human CBLC (NP_036248.3).
序列	DEVQERLQACRDKPGSYIFRPSCTRLGQWAIGYVSSDGSILQTIANKPLSQVLLLEGQKDGFLYDPDGKTHNPDLTELGQA EPQQRIVHSEEQLQLYWAMDSTFELCKICAESNKDVKIEPCGHLLCSCCLAAWQHSDSQTCPFCRCEIKGWEAVSIYQFH GQATAEDSGNSSDQEGRELELGQVPLSAPPLPPRPDLPPRKPRNAQPKVRLLKGNSPPAALGPQDPAPA

靶点信息

研究背景	This gene encodes a member of the Cbl family of E3 ubiquitin ligases. Cbl proteins play important roles in cell signaling through the ubiquitination and subsequent downregulation of tyrosine kinases. Expression of this gene may be restricted to epithelial cells, and alternatively spliced transcript variants encoding multiple isoforms have been observed for this gene.
基因ID	23624

基因名	CBLC
Swiss	Q9ULV8
别名	CBLC;CBL-3;CBL-SL;RNF57

产品验证



Western blot analysis of CBLC expressed in Mouse kidney,293T,Raji using CBLC Rabbit pAb at 1:1000. Secondary antibody: HRP Goat Anti-Rabbit IgG (H+L) at 1:5000. Lysates/proteins: 30ug per lane. Blocking buffer: 5% non-fat dry milk in TBST. Detection: ECL Enhanced Kit. Exposure time: 120s.

实验步骤

访问官网浏览详情: www.ablybio.cn