

CALHM1 Rabbit pAb

货号: **AYP16186**

产品信息

反应	Human,Rat
宿主	Rabbit
克隆性	Polyclonal
预测反应	
应用	WB IHC
推荐浓度	WB: 1:500 - 1:2000 IHC: 1:50 - 1:200
理论分子量	38kDa
实测分子量	45kDa
形式	Liquid
保存条件	Store at -20°C. Avoid freeze / thaw cycles. Buffer: PBS with 0.02% sodium azide,50% glycerol,pH7.3.
偶联物	Unconjugated
阳性对照	SH-SY5Y,HepG2,U-87MG
细胞定位	Cell membrane,Endoplasmic reticulum membrane,Multi-pass membrane protein
纯化	Affinity purification

抗原信息

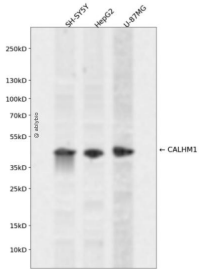
抗原信息	Recombinant fusion protein containing a sequence corresponding to amino acids 202-346 of human CALHM1 (NP_001001412.3).
序列	VRSVRPCFTQAAFLKSKYWSHYIDIERKLFDETCTEHAKAFKVCIQQFFEAMNHDLELGHTHGTLATAPASAAAPTTPDG AEEEREKLRGITDQGTMRLLTSWHKCKPPLRLGQEEPPLMGNGWAGGGPRPPRKEVATYFSKV

靶点信息

研究背景	This gene encodes a calcium channel that plays a role in processing of amyloid-beta precursor protein. A polymorphism at this locus has been reported to be associated with susceptibility to late-onset Alzheimer's disease in some populations, but the pathogenicity of this polymorphism is unclear.
基因ID	255022

基因名	CALHM1
Swiss	Q8IU99
别名	CALHM1;FAM26C

产品验证



Western blot analysis of CALHM1 expressed in SH-SY5Y, HepG2, U-87MG using CALHM1 Rabbit pAb at 1:1000. Secondary antibody: HRP Goat Anti-Rabbit IgG (H+L) at 1:5000. Lysates/proteins: 30ug per lane. Blocking buffer: 5% non-fat dry milk in TBST. Detection: ECL Enhanced Kit. Exposure time: 120s.

实验步骤

访问官网浏览详情: www.ablybio.cn