

FGF13 Rabbit pAb

货号: **AYP16169**

产品信息

反应	Human,Mouse,Rat
宿主	Rabbit
克隆性	Polyclonal
预测反应	
应用	WB
推荐浓度	WB: 1:500 - 1:2000
理论分子量	21kDa/22kDa/25kDa/27kDa/28kDa
实测分子量	28kDa
形式	Liquid
保存条件	Store at -20°C. Avoid freeze / thaw cycles. Buffer: PBS with 0.02% sodium azide,50% glycerol,pH7.3.
偶联物	Unconjugated
阳性对照	Mouse brain,Mouse heart,Mouse spinal cord,Rat brain,Rat heart
细胞定位	Cell projection,Cytoplasm,Cytoplasm,Nucleus,dendrite,filopodium,growth cone,nucleolus
纯化	Affinity purification

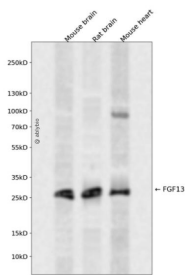
抗原信息

抗原信息	Recombinant fusion protein containing a sequence corresponding to amino acids 1-245 of human FGF13 (NP_004105.1).
序列	MAAAIASSLIRQKRQAREREKSNACKCVSSPSKGKTSCKDKNLNVFSRVKLFSGSKRRRRRPEPQLKGIVTKLYSRQGYHLQLQADGTIDGTDKDEDSTYTLFNLIPVGLRVVAIQGVQTKLYLAMNSEGYLYTSELFPECKFKESVFENYYVTYSSMIYRQQSGRGWYLGLNKEGEIMKGNHVKKNKPAAHFLPKPLKVAMYKEPSLHDLTEFSRSGSGTPTKSRSVSGVLNNGGKSMHNEST

靶点信息

研究背景	The protein encoded by this gene is a member of the fibroblast growth factor (FGF) family. FGF family members possess broad mitogenic and cell survival activities, and are involved in a variety of biological processes, including embryonic development, cell growth, morphogenesis, tissue repair, tumor growth, and invasion. This gene is located in a region on chromosome X, which is associated with Borjeson-Forssman-Lehmann syndrome (BFLS), making it a possible candidate gene for familial cases of the BFLS, and for other syndromal and nonspecific forms of X-linked mental retardation mapping to this region. Alternative splicing of this gene at the 5' end results in several transcript variants encoding different isoforms with different N-termini.
基因ID	2258
基因名	FGF13
Swiss	Q92913
别名	FGF13;FGF-13;FGF2;FHF-2;FHF2

产品验证



Western blot analysis of FGF13 expressed in Mouse brain,Rat brain,Mouse heart using FGF13 Rabbit pAb at 1:1000. Secondary antibody: HRP Goat Anti-Rabbit IgG (H+L) at 1:5000. Lysates/proteins: 30ug per lane. Blocking buffer: 5% non-fat dry milk in TBST. Detection: ECL Enhanced Kit. Exposure time: 120s.

实验步骤

访问官网浏览详情: www.ablybio.cn