

LIM2 Rabbit pAb

货号: **AYP16165**

产品信息

反应	Human,Mouse,Rat
宿主	Rabbit
克隆性	Polyclonal
预测反应	
应用	WB
推荐浓度	WB: 1:500 - 1:2000
理论分子量	19kDa/24kDa
实测分子量	20kDa
形式	Liquid
保存条件	Store at -20°C. Avoid freeze / thaw cycles. Buffer: PBS with 0.02% sodium azide,50% glycerol,pH7.3.
偶联物	Unconjugated
阳性对照	BT-474,HepG2,Jurkat,Mouse liver,Mouse eye,Rat liver
细胞定位	Membrane,Multi-pass membrane protein
纯化	Affinity purification

抗原信息

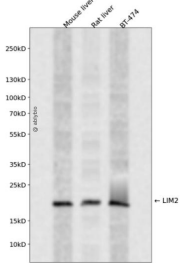
抗原信息	Recombinant fusion protein containing a sequence corresponding to amino acids 25-110 of human LIM2 (NP_085915.2).
序列	TDHWMQYRLSGSFAHQGLWRYCLGNKCYLQDSIGEPGQGPRAWGKSRADLGAQGHLYSRWRTLRLKEGKGATQAYWNATRAFM

靶点信息

研究背景	This gene encodes an eye lens-specific protein found at the junctions of lens fiber cells, where it may contribute to cell junctional organization. It acts as a receptor for calmodulin, and may play an important role in both lens development and cataractogenesis. Mutations in this gene have been associated with cataract formation. Alternatively spliced transcript variants encoding different isoforms have been found for this gene.
基因ID	3982

基因名	LIM2
Swiss	P55344
别名	LIM2;CTRCT19;MP17;MP19

产品验证



Western blot analysis of LIM2 expressed in Mouse liver,Rat liver,BT-474 using LIM2 Rabbit pAb at 1:1000. Secondary antibody: HRP Goat Anti-Rabbit IgG (H+L) at 1:5000. Lysates/proteins: 30ug per lane. Blocking buffer: 5% non-fat dry milk in TBST. Detection: ECL Enhanced Kit. Exposure time: 120s.

实验步骤

访问官网浏览详情: www.ablybio.cn