

PDE6A Rabbit pAb

货号: **AYP16161**

产品信息

反应	Human,Mouse,Rat
宿主	Rabbit
克隆性	Polyclonal
预测反应	
应用	WB IHC
推荐浓度	WB: 1:500 - 1:2000 IHC: 1:50 - 1:200
理论分子量	99kDa
实测分子量	120kDa
形式	Liquid
保存条件	Store at -20°C. Avoid freeze / thaw cycles. Buffer: PBS with 0.02% sodium azide,50% glycerol,pH7.3.
偶联物	Unconjugated
阳性对照	BT-474,Rat brain
细胞定位	Cell membrane,Cytoplasmic side,Lipid-anchor
纯化	Affinity purification

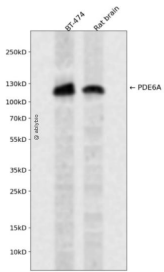
抗原信息

抗原信息	Recombinant fusion protein containing a sequence corresponding to amino acids 656-860 of human PDE6 A (NP_000431.2).
序列	EHAIHMMDIAIATDLALYFKKRTMFQKIVDQSKTYESEQEWYQYMMLEQTRKEIVMAMMMTACDLSAITKPWEVQSQVALLVAAEFWEQGDLETLVLRQNPIMMDRNKADELPLKLVGFIDFVCTFVYKEFSRFHEEITPMLDGITNNRKEWKALADEYDAKMKVQEEKQKQSAKSAAGNQPGGNPSPGGATTSKSCCIQ

靶点信息

研究背景	This gene encodes the cyclic-GMP (cGMP)-specific phosphodiesterase 6A alpha subunit, expressed in cells of the retinal rod outer segment. The phosphodiesterase 6 holoenzyme is a heterotrimer composed of an alpha, beta, and two gamma subunits. cGMP is an important regulator of rod cell membrane current, and its dynamic concentration is established by phosphodiesterase 6A cGMP hydrolysis and guanylate cyclase cGMP synthesis. The protein is a subunit of a key phototransduction enzyme and participates in processes of transmission and amplification of the visual signal. Mutations in this gene have been identified as one cause of autosomal recessive retinitis pigmentosa.
基因ID	5145
基因名	PDE6A
Swiss	P16499
别名	PDE6A;CGPR-A;PDEA;RP43

产品验证



Western blot analysis of PDE6A expressed in BT-474, Rat brain using PDE6A Rabbit pAb at 1:1000. Secondary antibody: HRP Goat Anti-Rabbit IgG (H+L) at 1:5000. Lysates/proteins: 30ug per lane. Blocking buffer: 5% non-fat dry milk in TBST. Detection: ECL Enhanced Kit. Exposure time: 120s.

实验步骤

访问官网浏览详情: www.ablybio.cn