

# WHSC1 Rabbit pAb

货号: AYP16152

## 产品信息

反应	Human,Mouse
宿主	Rabbit
克隆性	Polyclonal
预测反应	
应用	WB IHC
推荐浓度	<b>WB:</b> 1:500 - 1:2000 <b>IHC:</b> 1:50 - 1:200
理论分子量	30kDa/53kDa/66kDa/69kDa/71kDa/80kDa/152kDa
实测分子量	80kDa, 152kDa
形式	Liquid
保存条件	Store at -20°C. Avoid freeze / thaw cycles. Buffer: PBS with 0.02% sodium azide,50% glycerol,pH7.3.
偶联物	Unconjugated
阳性对照	HeLa,HepG2,SW620,Mouse brain,Mouse spleen
细胞定位	Chromosome,Cytoplasm,Nucleus
纯化	Affinity purification

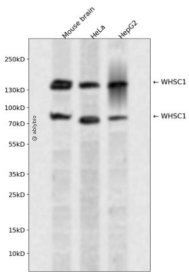
## 抗原信息

抗原信息	Recombinant fusion protein containing a sequence corresponding to amino acids 1-240 of human WHSC1 (NP_579877.1).
序列	MEFSIKQSPLSVQSVVKCIKMKQAPEILGSANGKTPSCEVNRECSVFLSKAQLSSSLQEGVMQKFNGHLDALPFIPADKDKD LTSRVFNQEPGAHDAKLRFESQEMKIGITPPNTTPIKNGSPEIKLKITKTYMNGKPLFESSICGDSAADVVSQSEENGQKPEN KARRNRKRSIKYDSLLEQGLVEAALVSKISSPSDKKIPAKKESCNPNTGRDKDHLKYNVGDVWWSKVSGYPWWPCMV

## 靶点信息

研究背景	This gene encodes a protein that contains four domains present in other developmental proteins: a PWWP domain, an HMG box, a SET domain, and a PHD-type zinc finger. It is expressed ubiquitously in early development. Wolf-Hirschhorn syndrome (WHS) is a malformation syndrome associated with a hemizygous deletion of the distal short arm of chromosome 4. This gene maps to the 165 kb WHS critical region and has also been involved in the chromosomal translocation t(4;14)(p16.3;q32.3) in multiple myelomas. Alternative splicing of this gene results in multiple transcript variants encoding different isoforms. Some transcript variants are nonsense-mediated mRNA (NMD) decay candidates, hence not represented as reference sequences.
基因ID	7468
基因名	NSD2
Swiss	O96028
别名	NSD2;KMT3F;KMT3G;MMSET;REIIBP;TRX5;WHS;WHSC1

## 产品验证



Western blot analysis of WHSC1 expressed in Mouse brain, HeLa, HepG2 using WHSC1 Rabbit pAb at 1:1000. Secondary antibody: HRP Goat Anti-Rabbit IgG (H+L) at 1:5000. Lysates/proteins: 30ug per lane. Blocking buffer: 5% non-fat dry milk in TBST. Detection: ECL Enhanced Kit. Exposure time: 120s.

## 实验步骤

访问官网浏览详情: [www.ablybio.cn](http://www.ablybio.cn)