

ARHGEF11 Rabbit pAb

货号: **AYP16145**

产品信息

反应	Human,Mouse
宿主	Rabbit
克隆性	Polyclonal
预测反应	
应用	WB IHC
推荐浓度	WB: 1:500 - 1:2000 IHC: 1:50 - 1:100
理论分子量	167kDa/172kDa
实测分子量	168kDa
形式	Liquid
保存条件	Store at -20°C. Avoid freeze / thaw cycles. Buffer: PBS with 0.02% sodium azide,50% glycerol,pH7.3.
偶联物	Unconjugated
阳性对照	Mouse brain
细胞定位	Cytoplasm,Membrane
纯化	Affinity purification

抗原信息

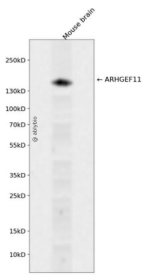
抗原信息	A synthetic peptide corresponding to a sequence within amino acids 1-100 of human ARHGEF11 (O15085).
序列	MSVRLPQSIDRLSSLSSLGDSAPERKSPSHHRQPSDASETTGLVQRCVVIQKDQHGFGFTVSGDRIVLVQSVRPGGAAMK AGVKEGDRIIKVNGTMVTNS

靶点信息

研究背景	Rho GTPases play a fundamental role in numerous cellular processes that are initiated by extracellular stimuli that work through G protein coupled receptors. The encoded protein may form a complex with G proteins and stimulate Rho-dependent signals. A similar protein in rat interacts with glutamate transporter EAAT4 and modulates its glutamate transport activity. Expression of the rat protein induces the reorganization of the actin cytoskeleton and its overexpression induces the formation of membrane ruffling and filopodia. Two alternative transcripts encoding different isoforms have been described.
------	--

基因ID	9826
基因名	ARHGEF11
Swiss	O15085
别名	ARHGEF11;GTRAP48;PDZ-RHOGEF

产品验证



Western blot analysis of ARHGEF11 expressed in Mouse brain using ARHGEF11 Rabbit pAb at 1:1000. Secondary antibody: HRP Goat Anti-Rabbit IgG (H+L) at 1:5000. Lysates/proteins: 30ug per lane. Blocking buffer: 5% non-fat dry milk in TBST. Detection: ECL Enhanced Kit. Exposure time: 120s.

实验步骤

访问官网浏览详情: www.ablybio.cn