

MTX2 Rabbit pAb

货号: **AYP16140**

产品信息

反应	Human,Mouse,Rat
宿主	Rabbit
克隆性	Polyclonal
预测反应	
应用	WB IF/ICC
推荐浓度	WB: 1:500 - 1:2000 IF/ICC: 1:50 - 1:200
理论分子量	28kDa/29kDa
实测分子量	29kDa
形式	Liquid
保存条件	Store at -20°C. Avoid freeze / thaw cycles. Buffer: PBS with 0.02% sodium azide,50% glycerol,pH7.3.
偶联物	Unconjugated
阳性对照	Jurkat,NCI-H460,Mouse liver,Mouse kidney
细胞定位	Mitochondrion,Mitochondrion outer membrane
纯化	Affinity purification

抗原信息

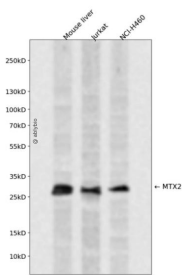
抗原信息	Recombinant fusion protein containing a sequence corresponding to amino acids 1-263 of human MTX2 (NP_006545.1).
序列	MSLVAEAFVFSQIAAAEPWPENATLYQQLKGEQILLSDNAASLAVQAFLQMCNLPKVVCRANA EYMSPSGKVPFIHVGNQV VSELGPIVQFVKAKGHSLS DGLEEVQKAEMKAYMELVNNMLLTAELYLQWCDEATVGEITHARYGSPYPWPLNHILAYQK QWEVKRKMKAIGWGKKTLDQVLEDVDQCCQALSQRLGTQPYFFNKQPTELDALVFGHLYTILTTQLTNDELSEKVKNY S NLLAFCRRIEQHYFEDRGKGRLS

靶点信息

研究背景	The protein encoded by this gene is highly similar to the metaxin 2 protein from mouse, which has been shown to interact with the mitochondrial membrane protein metaxin 1. Because of this similarity, it is thought that the encoded protein is peripherally associated with the cytosolic face of the outer mitochondrial membrane, and that it is involved in the import of proteins into the mitochondrion. Alternative splicing results in multiple transcript variants. A related pseudogene has been identified on chromosome 7.
------	--

基因ID	10651
基因名	MTX2
Swiss	O75431
别名	MTX2;metaxin-2

产品验证



Western blot analysis of MTX2 expressed in Mouse liver, Jurkat, NCI-H460 using MTX2 Rabbit pAb at 1:1000. Secondary antibody: HRP Goat Anti-Rabbit IgG (H+L) at 1:5000. Lysates/proteins: 30ug per lane. Blocking buffer: 5% non-fat dry milk in TBST. Detection: ECL Enhanced Kit. Exposure time: 120s.

实验步骤

访问官网浏览详情: www.ablybio.cn