

# ARHGEF9 Rabbit pAb

货号: **AYP16138**

## 产品信息

反应	Human,Mouse,Rat
宿主	Rabbit
克隆性	Polyclonal
预测反应	
应用	WB
推荐浓度	<b>WB:</b> 1:500 - 1:2000
理论分子量	49kDa/54kDa/60kDa
实测分子量	61kDa
形式	Liquid
保存条件	Store at -20°C. Avoid freeze / thaw cycles. Buffer: PBS with 0.02% sodium azide,50% glycerol,pH7.3.
偶联物	Unconjugated
阳性对照	BT-474,22Rv1,HeLa
细胞定位	Cytoplasm
纯化	Affinity purification

## 抗原信息

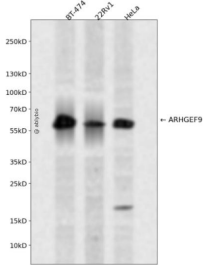
抗原信息	Recombinant fusion protein containing a sequence corresponding to amino acids 307-516 of human ARH GEF9 (NP_056000.1).
序列	WEGEDILDRSSELIYTGEMAWIYQPYGRNQQRVFFLFDHQMVLCKKDLIRRDILYYKGRIDMDKYEVVDIEDGRDDDFNV SMKNAFKLHNKETEEIHLFFAKKLEEKIRWLRARFREERKMVQEDEKIGFEISENQKRQAAMTVRKVPKQKGVNSARSVPPS YPPPQDPLNHGQYLVPDGIASQVFEFTEPKRSQSPFWQNFSLTPFKK

## 靶点信息

研究背景	The protein encoded by this gene is a Rho-like GTPase that switches between the active (GTP-bound) state and inactive (GDP-bound) state to regulate CDC42 and other genes. Defects in this gene are a cause of startle disease with epilepsy (STHEE), also known as hyperekplexia with epilepsy. Three transcript variants encoding different isoforms have been found for this gene.
基因ID	23229

基因名	ARHGEF9
Swiss	O43307
别名	ARHGEF9;COLLYBISTIN;EIEE8;HPEM-2;PEM-2;PEM2

## 产品验证



Western blot analysis of ARHGEF9 expressed in BT-474,22Rv1,HeLa using ARHGEF9 Rabbit pAb at 1:1000. Secondary antibody: HRP Goat Anti-Rabbit IgG (H+L) at 1:5000. Lysates/proteins: 30ug per lane. Blocking buffer: 5% non-fat dry milk in TBST. Detection: ECL Enhanced Kit. Exposure time: 120s.

## 实验步骤

访问官网浏览详情: [www.ablybio.cn](http://www.ablybio.cn)