

L2HGDH Rabbit pAb

货号: **AYP16125**

产品信息

反应	Human,Mouse
宿主	Rabbit
克隆性	Polyclonal
预测反应	
应用	WB
推荐浓度	WB: 1:500 - 1:2000
理论分子量	48kDa/50kDa
实测分子量	40kDa
形式	Liquid
保存条件	Store at -20°C. Avoid freeze / thaw cycles. Buffer: PBS with 0.02% sodium azide,50% glycerol,pH7.3.
偶联物	Unconjugated
阳性对照	Mouse kidney,Mouse heart
细胞定位	Mitochondrion
纯化	Affinity purification

抗原信息

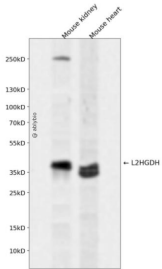
抗原信息	Recombinant fusion protein containing a sequence corresponding to amino acids 1-220 of human L2HGDH (NP_079160.1).
序列	MVPALRYLVGACGRARGLFAGGSPGACGFASGRPRPLCGGSRSASTSSFDIVVGGGIVGLASARALILRHPSLSIGVLEKE KDLAVHQTGHNSGVIHSGIYYKPESLKAKLCVQGAALLYEYCQKGISYKQCGKLIVAVEQEEIPRLQALYEKGLQNGVPG RLIQQEDIKKKEPYCRGLMAIDCPHTGIVDYRQVALSFAQDFQEAGGSVLTNFEVK

靶点信息

研究背景	This gene encodes L-2-hydroxyglutarate dehydrogenase, a FAD-dependent enzyme that oxidizes L-2-hydroxyglutarate to alpha-ketoglutarate in a variety of mammalian tissues. Mutations in this gene cause L-2-hydroxyglutaric aciduria, a rare autosomal recessive neurometabolic disorder resulting in moderate to severe mental retardation.
基因ID	79944

基因名	L2HGDH
Swiss	Q9H9P8
别名	L2HGDH;C14orf160;L2HGA

产品验证



Western blot analysis of L2HGDH expressed in Mouse kidney, Mouse heart using L2HGDH Rabbit pAb at 1:1000. Secondary antibody: HRP Goat Anti-Rabbit IgG (H+L) at 1:5000. Lysates/proteins: 30ug per lane. Blocking buffer: 5% non-fat dry milk in TBST. Detection: ECL Enhanced Kit. Exposure time: 120s.

实验步骤

访问官网浏览详情: www.ablybio.cn