

MLF1 Rabbit pAb

货号: **AYP16120**

产品信息

反应	Human,Mouse
宿主	Rabbit
克隆性	Polyclonal
预测反应	
应用	WB IF/ICC
推荐浓度	WB: 1:500 - 1:2000 IF/ICC: 1:50 - 1:100
理论分子量	23kDa/27kDa/29kDa/30kDa/33kDa
实测分子量	35kDa
形式	Liquid
保存条件	Store at -20°C. Avoid freeze / thaw cycles. Buffer: PBS with 0.02% sodium azide,50% glycerol,pH7.3.
偶联物	Unconjugated
阳性对照	HeLa,BT-474,Mouse testis
细胞定位	Cytoplasm,Nucleus
纯化	Affinity purification

抗原信息

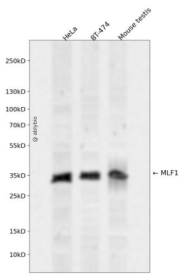
抗原信息	Recombinant fusion protein containing a sequence corresponding to amino acids 1-268 of human MLF1 (NP_071888.1).
序列	MFRMLNSSFEDDPFFSEILAHRENMRQMIRSFSEPFGRDLLSISDGRGRAHNRGRHNDGEDSLTHTDVSSSQTMDQM VSNMRNYMQKLERNFGQLSVDPNGHSFCSSSVMTYSKIGDEPPKVFQASTQTRRAPGGIKETRKAMRDSDSGLEKMAIG HHIHDRAHVIKSKNKKTGDEEVNQEFINMNESDAHAFADEEWQSEVLKYKPRHNLGNTRMRSVGHENPGSRELKRREK PQQSPAIEHGRRSNVLGDKLHIKSSVKSNNK

靶点信息

研究背景	This gene encodes an oncoprotein which is thought to play a role in the phenotypic determination of hemopoietic cells. Translocations between this gene and nucleophosmin have been associated with myelodysplastic syndrome and acute myeloid leukemia. Multiple transcript variants encoding different isoforms have been found for this gene.
------	--

基因ID	4291
基因名	MLF1
Swiss	P58340
别名	MLF1

产品验证



Western blot analysis of MLF1 expressed in HeLa,BT-474,Mouse testis using MLF1 Rabbit pAb at 1:1000. Secondary antibody: HRP Goat Anti-Rabbit IgG (H+L) at 1:5000. Lysates/proteins: 30ug per lane. Blocking buffer: 5% non-fat dry milk in TBST. Detection: ECL Enhanced Kit. Exposure time: 120s.

实验步骤

访问官网浏览详情: www.ablybio.cn