

PHKB Rabbit pAb

货号: **AYP16118**

产品信息

反应	Human,Mouse
宿主	Rabbit
克隆性	Polyclonal
预测反应	
应用	WB
推荐浓度	WB: 1:500 - 1:2000
理论分子量	123kDa/124kDa
实测分子量	125kDa
形式	Liquid
保存条件	Store at -20°C. Avoid freeze / thaw cycles. Buffer: PBS with 0.02% sodium azide,50% glycerol,pH7.3.
偶联物	Unconjugated
阳性对照	HepG2,SW620,Jurkat,BT-474
细胞定位	Cell membrane,Cytoplasmic side,Lipid-anchor
纯化	Affinity purification

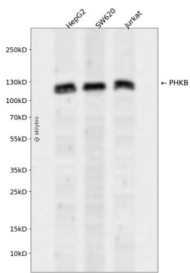
抗原信息

抗原信息	Recombinant fusion protein containing a sequence corresponding to amino acids 854-1093 of human PHK B (NP_000284.1).
序列	VIHIGWIISNNPELFSGMLKIRIGWIIHAMEYELQIRGGDKPALDLYQLSPSEVKQLLLDILQPQQNGRCWLNRRQIDGSLNR TPTGFYDRVWQILERTPNGIIVAGKHLPPQPTLSDMTMYEMNFSLLVEDTLGNIDQPQYRQIVVELLMVVSIVLERNPELEF QDKVDLDRLVKEAFNEFQKQSRLEIEKQDDMTSFYNTPLGKRGTCSYLTKAVMNLLEGEVKPNDDPCLIS

靶点信息

研究背景	Phosphorylase kinase is a polymer of 16 subunits, four each of alpha, beta, gamma and delta. The alpha subunit includes the skeletal muscle and hepatic isoforms, encoded by two different genes. The beta subunit is the same in both the muscle and hepatic isoforms, encoded by this gene, which is a member of the phosphorylase b kinase regulatory subunit family. The gamma subunit also includes the skeletal muscle and hepatic isoforms, encoded by two different genes. The delta subunit is a calmodulin and can be encoded by three different genes. The gamma subunits contain the active site of the enzyme, whereas the alpha and beta subunits have regulatory functions controlled by phosphorylation. The delta subunit mediates the dependence of the enzyme on calcium concentration. Mutations in this gene cause glycogen storage disease type 9B, also known as phosphorylase kinase deficiency of liver and muscle. Alternatively spliced transcript variants encoding different isoforms have been identified in this gene. Two pseudogenes have been found on chromosomes 14 and 20, respectively.
基因ID	5257
基因名	PHKB
Swiss	Q93100
别名	PHKB

产品验证



Western blot analysis of PHKB expressed in HepG2, SW620, Jurkat using PHKB Rabbit pAb at 1:1000. Secondary antibody: HRP Goat Anti-Rabbit IgG (H+L) at 1:5000. Lysates/proteins: 30ug per lane. Blocking buffer: 5% non-fat dry milk in TBST. Detection: ECL Enhanced Kit. Exposure time: 120s.

实验步骤

访问官网浏览详情: www.ablybio.cn