

HMGCL Rabbit pAb

货号: AYP16109

产品信息

反应	Human,Mouse,Rat
宿主	Rabbit
克隆性	Polyclonal
预测反应	
应用	WB IHC
推荐浓度	WB: 1:500 - 1:2000 IHC: 1:50 - 1:200
理论分子量	20kDa/26kDa/34kDa
实测分子量	30kDa
形式	Liquid
保存条件	Store at -20°C. Avoid freeze / thaw cycles. Buffer: PBS with 0.02% sodium azide,50% glycerol,pH7.3.
偶联物	Unconjugated
阳性对照	U-251MG,SKOV3,BT-474,MCF7,Mouse liver,Mouse kidney
细胞定位	Mitochondrion matrix,Peroxisome
纯化	Affinity purification

抗原信息

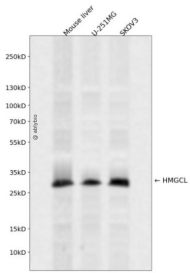
抗原信息	Recombinant fusion protein containing a sequence corresponding to amino acids 1-325 of human HMGCL (NP_000182.2).
序列	MAAMRKALPRRLVGLASLRVSTSSMGTLPKRVKIVEVGPDRDGLQNEKNIVSTPVKIKLIDMLSEAGLSVIETTSFVSPKWV PQMGDHTTEVLKGIQKFPGINYPVLTPNLKGFEEAAVAAGAKEVVIFGAASELFTKKNINCSIEESFQRFDAILKAAQSANISVR GYVSCALGCPYEGKISPAKVAEVTKKFYSMGCYEISLGDITIGVGTGPGIMKDMLSAVMQEVPLAALAVHCHDITYGQALANTL MALQMGVSVVDSSVAGLGGCPYAQQGASGNLATEDLVYMLEGLGIHTGVNLQKLEAGNFICQALNRKTSKVAQATCKL

靶点信息

研究背景	The protein encoded by this gene belongs to the HMG-CoA lyase family. It is a mitochondrial enzyme that catalyzes the final step of leucine degradation and plays a key role in ketone body formation. Mutations in this gene are associated with HMG-CoA lyase deficiency. Alternatively spliced transcript variants encoding different isoforms have been found for this gene.
------	--

基因ID	3155
基因名	HMGCL
Swiss	P35914
别名	HMGCL;HL

产品验证



Western blot analysis of HMGCL expressed in Mouse liver,U-251MG,SKOV3 using HMGCL Rabbit pAb at 1:1000. Secondary antibody: HRP Goat Anti-Rabbit IgG (H+L) at 1:5000. Lysates/proteins: 30ug per lane. Blocking buffer: 5% non-fat dry milk in TBST. Detection: ECL Enhanced Kit. Exposure time: 120s.

实验步骤

访问官网浏览详情: www.ablybio.cn