

CEBPE Rabbit pAb

货号: **AYP16106**

产品信息

反应	Human,Mouse
宿主	Rabbit
克隆性	Polyclonal
预测反应	
应用	WB
推荐浓度	WB: 1:500 - 1:2000
理论分子量	30kDa
实测分子量	35kDa
形式	Liquid
保存条件	Store at -20°C. Avoid freeze / thaw cycles. Buffer: PBS with 0.02% sodium azide,50% glycerol,pH7.3.
偶联物	Unconjugated
阳性对照	NCI-H460,Mouse spleen
细胞定位	Nucleus
纯化	Affinity purification

抗原信息

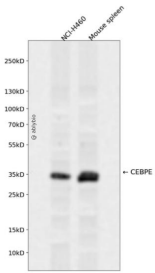
抗原信息	Recombinant fusion protein containing a sequence corresponding to amino acids 1-190 of human CEBPE (NP_001796.2).
序列	MSHGTYECEPRGGQQPLEFSGGRAGPGELGDMCEHEASIDLSAYIESGEEQLLSDLFAVKPAPEARGLKGPGTAPFPHY LPPDPRPFAYPPHTFGPDRKALGPGIYSSPGSYDPRAVAVKKEPRGPEGSRAASRGSYNPLQYQVAHCGQTAMHLPPTLA APGQPLRVLKAPLATAAPPCSPLLKAPSPA

靶点信息

研究背景	The protein encoded by this gene is a bZIP transcription factor which can bind as a homodimer to certain DNA regulatory regions. It can also form heterodimers with the related protein CEBP-delta. The encoded protein may be essential for terminal differentiation and functional maturation of committed granulocyte progenitor cells. Mutations in this gene have been associated with Specific Granule Deficiency, a rare congenital disorder. Multiple variants of this gene have been described, but the full-length nature of only one has been determined.
------	--

基因ID	1053
基因名	CEBPE
Swiss	Q15744
别名	CEBPE;C/EBP-epsilon;CRP1

产品验证



Western blot analysis of CEBPE expressed in NCI-H460, Mouse spleen using CEBPE Rabbit pAb at 1:1000. Secondary antibody: HRP Goat Anti-Rabbit IgG (H+L) at 1:5000. Lysates/proteins: 30ug per lane. Blocking buffer: 5% non-fat dry milk in TBST. Detection: ECL Enhanced Kit. Exposure time: 120s.

实验步骤

访问官网浏览详情: www.ablybio.cn