

# AMY2A Rabbit pAb

货号: **AYP16105**

## 产品信息

反应	Human,Mouse,Rat
宿主	Rabbit
克隆性	Polyclonal
预测反应	
应用	WB
推荐浓度	<b>WB:</b> 1:500 - 1:2000
理论分子量	30kDa/57kDa
实测分子量	58kDa
形式	Liquid
保存条件	Store at -20°C. Avoid freeze / thaw cycles. Buffer: PBS with 0.02% sodium azide,50% glycerol,pH7.3.
偶联物	Unconjugated
阳性对照	Mouse intestine,Rat intestine
细胞定位	Secreted,extracellular space
纯化	Affinity purification

## 抗原信息

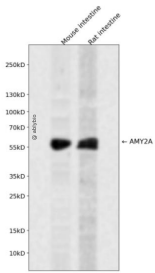
抗原信息	Recombinant fusion protein containing a sequence corresponding to amino acids 242-511 of human AMY 2A (NP_000690.1).
序列	KPFIYQEVIDLGGPEIKSSDYFGNGRVTEFKYGAKLGTVIRKWNWGEKMSYLKNWGEWGFVPSDRALVVDNHDNQRG HGAGGASILTFWDARLYKMAVGFMLAHPYGFTRVMSSYRWPRQFQNGDVNDWVGPPNNGVIKEVTINPDTCGND WVCEHRWRQIRNMVIFRNVDGQPFTNWDNGSNQVAFGRGNRGFIVFNDDWSFSLTLQTGLPAGTYCDVISGDKIN GNCTGIKIYVSDDGKAHFSISNSAEDPFIAIHAESKL

## 靶点信息

研究背景	This gene encodes a member of the alpha-amylase family of proteins. Amylases are secreted proteins that hydrolyze 1,4-alpha-glucoside bonds in oligosaccharides and polysaccharides, catalyzing the first step in digestion of dietary starch and glycogen. This gene and several family members are present in a gene cluster on chromosome 1. This gene encodes an amylase isoenzyme produced by the pancreas.
------	--

基因ID	279
基因名	AMY2A
Swiss	P04746
别名	AMY2A;AMY2;PA

## 产品验证



Western blot analysis of AMY2A expressed in Mouse intestine,Rat intestine using AMY2A Rabbit pAb at 1:1 000. Secondary antibody: HRP Goat Anti-Rabbit IgG (H+L) at 1:5000. Lysates/proteins: 30ug per lane. Blo cking buffer: 5% non-fat dry milk in TBST. Detection: ECL Enhanced Kit. Exposure time: 120s.

## 实验步骤

访问官网浏览详情: [www.ablybio.cn](http://www.ablybio.cn)