

MTCH1 Rabbit pAb

货号: **AYP16099**

产品信息

反应	Human,Mouse,Rat
宿主	Rabbit
克隆性	Polyclonal
预测反应	
应用	WB IHC
推荐浓度	WB: 1:500 - 1:2000 IHC: 1:50 - 1:200
理论分子量	19kDa/39kDa/41kDa
实测分子量	45-50kDa
形式	Liquid
保存条件	Store at -20°C. Avoid freeze / thaw cycles. Buffer: PBS with 0.02% sodium azide,50% glycerol,pH7.3.
偶联物	Unconjugated
阳性对照	MCF7,HepG2,Mouse brain,Rat brain
细胞定位	Mitochondrion inner membrane,Multi-pass membrane protein
纯化	Affinity purification

抗原信息

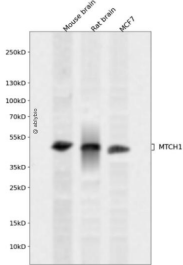
抗原信息	Recombinant fusion protein containing a sequence corresponding to amino acids 100-250 of human MTC H1 (NP_001258570.1).
序列	LYVLLIQVGHEPMPPTLGTNVLGRKVLVLPFFTYAKYIVQVDGKIGLFRGLSPRLMSNALSTVTRGSMKKVFPPDEIEQVS NKDDMKTSLKVVKETS YEEMMQCVSRMLAHPLHVISMRCMVQFVGREAKYSGVLSSIGKIFKEEGLL

靶点信息

研究背景	This gene encodes a member of the mitochondrial carrier family. The encoded protein is localized to the mitochondrion inner membrane and induces apoptosis independent of the proapoptotic proteins Bax and Bak. Pseudogenes on chromosomes 6 and 11 have been identified for this gene. Alternatively spliced transcript variants encoding multiple isoforms have been observed.
基因ID	23787

基因名	MTCH1
Swiss	Q9NZJ7
别名	MTCH1;CGI-64;PIG60;PSAP;SLC25A49

产品验证



Western blot analysis of MTCH1 expressed in Mouse brain,Rat brain,MCF7 using MTCH1 Rabbit pAb at 1:1000. Secondary antibody: HRP Goat Anti-Rabbit IgG (H+L) at 1:5000. Lysates/proteins: 30ug per lane. Blocking buffer: 5% non-fat dry milk in TBST. Detection: ECL Enhanced Kit. Exposure time: 120s.

实验步骤

访问官网浏览详情: www.ablybio.cn