

# SPEM1 Rabbit pAb

货号: **AYP16095**

## 产品信息

反应	Human,Rat
宿主	Rabbit
克隆性	Polyclonal
预测反应	
应用	WB
推荐浓度	<b>WB:</b> 1:500 - 1:2000
理论分子量	34kDa
实测分子量	36kDa
形式	Liquid
保存条件	Store at -20°C. Avoid freeze / thaw cycles. Buffer: PBS with 0.02% sodium azide,50% glycerol,pH7.3.
偶联物	Unconjugated
阳性对照	PC-3
细胞定位	Cytoplasm,Membrane,Single-pass membrane protein
纯化	Affinity purification

## 抗原信息

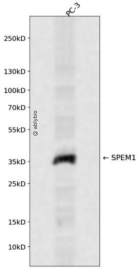
抗原信息	Recombinant fusion protein containing a sequence corresponding to amino acids 203-309 of human SPEM1 (NP_955371.2).
序列	YVYPVNPPPPSPEAPSHKNGGEGAVPEAEAAQYPVPAPTLGPAVIPEFSRHRSSGRIVYDARDMRRRLRELTREVEALSG CYPLASGSSTAEETSKNWVYRSLTGR

## 靶点信息

研究背景	Required for proper cytoplasm removal during spermatogenesis.
基因ID	374768
基因名	SPEM1

Swiss	Q8N4L4
别名	SPEM1;C17orf83

## 产品验证



Western blot analysis of SPEM1 expressed in PC-3 using SPEM1 Rabbit pAb at 1:1000. Secondary antibody : HRP Goat Anti-Rabbit IgG (H+L) at 1:5000. Lysates/proteins: 30ug per lane. Blocking buffer: 5% non-fat dry milk in TBST. Detection: ECL Enhanced Kit. Exposure time: 120s.

## 实验步骤

访问官网浏览详情: [www.ablybio.cn](http://www.ablybio.cn)