

# CKMT2 Rabbit pAb

货号: **AYP16092**

## 产品信息

反应	Human,Mouse,Rat
宿主	Rabbit
克隆性	Polyclonal
预测反应	
应用	WB
推荐浓度	<b>WB:</b> 1:500 - 1:2000
理论分子量	47kDa
实测分子量	40kDa
形式	Liquid
保存条件	Store at -20°C. Avoid freeze / thaw cycles. Buffer: PBS with 0.02% sodium azide,50% glycerol,pH7.3.
偶联物	Unconjugated
阳性对照	HeLa,Mouse skeletal muscle,Mouse heart,Mouse diaphragm,Rat skeletal muscle
细胞定位	Intermembrane side,Mitochondrion inner membrane,Peripheral membrane protein
纯化	Affinity purification

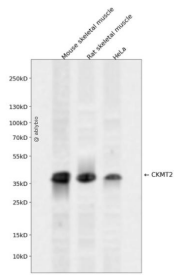
## 抗原信息

抗原信息	Recombinant fusion protein containing a sequence corresponding to amino acids 40-230 of human CKMT 2 (NP_001816.2).
序列	EVREQPRLFPSPADYPDLRKHNNCMAECLTPAIYAKLRNKVTPNGYTLDQCIQTGVDNPGHPFIKTVGMVAGDEESYEVFA DLFDPVIKLRHNGYDPRVMKHTTDL DASKITQGQFDEHYVLSRVRTGRSIRGLSLPPACTRAERREVENVAITALEGLKG DLAGRYKLSSEMTEQDQQLIDDHFLFDK

## 靶点信息

研究背景	Mitochondrial creatine kinase (MtCK) is responsible for the transfer of high energy phosphate from mitochondria to the cytosolic carrier, creatine. It belongs to the creatine kinase isoenzyme family. It exists as two isoenzymes, sarcomeric MtCK and ubiquitous MtCK, encoded by separate genes. Mitochondrial creatine kinase occurs in two different oligomeric forms: dimers and octamers, in contrast to the exclusively dimeric cytosolic creatine kinase isoenzymes. Sarcomeric mitochondrial creatine kinase has 80% homology with the coding exons of ubiquitous mitochondrial creatine kinase. This gene contains sequences homologous to several motifs that are shared among some nuclear genes encoding mitochondrial proteins and thus may be essential for the coordinated activation of these genes during mitochondrial biogenesis. Three transcript variants encoding the same protein have been found for this gene.
基因ID	1160
基因名	CKMT2
Swiss	P17540
别名	CKMT2;SMTCK

## 产品验证



Western blot analysis of CKMT2 expressed in Mouse skeletal muscle, Rat skeletal muscle, HeLa using CKMT2 Rabbit pAb at 1:1000. Secondary antibody: HRP Goat Anti-Rabbit IgG (H+L) at 1:5000. Lysates/proteins: 30ug per lane. Blocking buffer: 5% non-fat dry milk in TBST. Detection: ECL Enhanced Kit. Exposure time: 120s.

## 实验步骤

访问官网浏览详情: [www.ablybio.cn](http://www.ablybio.cn)