

CFD Rabbit pAb

货号: **AYP16084**

产品信息

反应	Human,Mouse
宿主	Rabbit
克隆性	Polyclonal
预测反应	
应用	WB
推荐浓度	WB: 1:500 - 1:2000
理论分子量	27kDa
实测分子量	27kDa
形式	Liquid
保存条件	Store at -20°C. Avoid freeze / thaw cycles. Buffer: PBS with 0.02% sodium azide,50% glycerol,pH7.3.
偶联物	Unconjugated
阳性对照	A-549,22Rv1,THP-1,Mouse lung
细胞定位	Secreted
纯化	Affinity purification

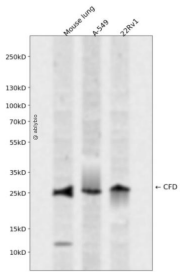
抗原信息

抗原信息	Recombinant fusion protein containing a sequence corresponding to amino acids 26-253 of human CFD (NP_001919.2).
序列	ILGGREAEAHARPYMASVQLNGAHLGGVLVAEQWVLSAAHCLEDAADGKVQVLLGAHLSQPEPSKRLYDVLRAVPH DSQPDIDHLLLLLQSEKATLGPVAVRPLPWQRVDRDVPAGTLCDVAGWGIVNHAGRRPDSLQHVLLPVLD RATCNRRTHHDGAIERLMCAESNRRDSCKGDGGPLVCGGVLEGVVTSGSRVCGNRKKPGIYTRVASYAAWIDSVLA

靶点信息

研究背景	This gene encodes a member of the S1, or chymotrypsin, family of serine peptidases. This protease catalyzes the cleavage of factor B, the rate-limiting step of the alternative pathway of complement activation. This protein also functions as an adipokine, a cell signaling protein secreted by adipocytes, which regulates insulin secretion in mice. Mutations in this gene underlie complement factor D deficiency, which is associated with recurrent bacterial meningitis infections in human patients. Alternative splicing of this gene results in multiple transcript variants. At least one of these variants encodes a preproprotein that is proteolytically processed to generate the mature protease.
基因ID	1675
基因名	CFD
Swiss	P00746
别名	CFD;ADIPSIN;ADN;DF;PFD

产品验证



Western blot analysis of CFD expressed in Mouse lung, A-549, 22Rv1 using CFD Rabbit pAb at 1:1000. Secondary antibody: HRP Goat Anti-Rabbit IgG (H+L) at 1:5000. Lysates/proteins: 30ug per lane. Blocking buffer: 5% non-fat dry milk in TBST. Detection: ECL Enhanced Kit. Exposure time: 120s.

实验步骤

访问官网浏览详情: www.ablybio.cn