

MEP1A Rabbit pAb

货号: **AYP16081**

产品信息

反应	Human,Mouse,Rat
宿主	Rabbit
克隆性	Polyclonal
预测反应	
应用	WB
推荐浓度	WB: 1:500 - 1:2000
理论分子量	84kDa
实测分子量	84kDa
形式	Liquid
保存条件	Store at -20°C. Avoid freeze / thaw cycles. Buffer: PBS with 0.02% sodium azide,50% glycerol,pH7.3.
偶联物	Unconjugated
阳性对照	Mouse kidney,Mouse intestine,Mouse pancreas,Rat kidney
细胞定位	Membrane,Single-pass type I membrane protein
纯化	Affinity purification

抗原信息

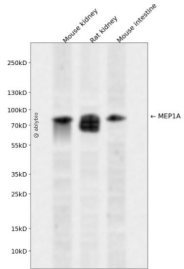
抗原信息	Recombinant fusion protein containing a sequence corresponding to amino acids 440-700 of human MEP 1A (NP_005579.2).
序列	NFSQVLENTSKGDKLQSPRFYNSEGYGFGVTLYPNSRESSGYLRLAFHVCSGENDAILEWPVENRQVIITILDQEPDVRNR MSSSMVFTTSKSHTSPAINDTVIWRPSRVGTYHTDCNCFRSIDLGWSGFISHQMLKRRSFLKNDDLIIFVDFEDITHLSQ TEVPTKGRKRLSPQGLILQGQEQVSEEGSGKAMLEELPVLSLQSQPSRQKRSVENTGPLEDHNWPQYFRDPCDPNPC QNDGICVNVKGMASCRCSGH

靶点信息

研究背景	Predicted to enable metalloendopeptidase activity. Predicted to be involved in proteolysis. Located in extracellular exosome. Part of meprin A complex.
基因ID	4224

基因名	MEP1A
Swiss	Q16819
别名	MEP1A;PPHA

产品验证



Western blot analysis of MEP1A expressed in Mouse kidney,Rat kidney,Mouse intestine using MEP1A Rabbit pAb at 1:1000. Secondary antibody: HRP Goat Anti-Rabbit IgG (H+L) at 1:5000. Lysates/proteins: 30ug per lane. Blocking buffer: 5% non-fat dry milk in TBST. Detection: ECL Enhanced Kit. Exposure time: 120s.

实验步骤

访问官网浏览详情: www.ablybio.cn