

NEU2 Rabbit pAb

货号: **AYP16080**

产品信息

反应	Human
宿主	Rabbit
克隆性	Polyclonal
预测反应	
应用	WB
推荐浓度	WB: 1:500 - 1:2000
理论分子量	42kDa
实测分子量	42kDa
形式	Liquid
保存条件	Store at -20°C. Avoid freeze / thaw cycles. Buffer: PBS with 0.02% sodium azide, 50% glycerol, pH7.3.
偶联物	Unconjugated
阳性对照	Raji
细胞定位	Cytoplasm
纯化	Affinity purification

抗原信息

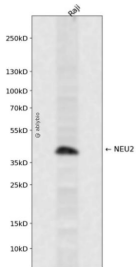
抗原信息	Recombinant fusion protein containing a sequence corresponding to amino acids 171-380 of human NEU 2 (NP_005374.2).
序列	ARSLVVPAYAYRKLHPIQRPIPSAFCLSHDHGRTWARGHFVAQDTLEQCVAEVETGEQRVVTLNARSHLRARVQAQSTN DGLDFQESQLVKLVEPPPQGCQGSVISFSPRSGPGSPAQWLLYTHPTHSWQRADLGAYLNPRPPAPEAWSEPVLAK GSCAYSDLQSMGTGPDGSPLFGCLYEANDYEEIVFLMFTLKQAFPAEYLPQ

靶点信息

研究背景	This gene belongs to a family of glycohydrolytic enzymes which remove sialic acid residues from glycoproteins and glycolipids. Expression studies in COS7 cells confirmed that this gene encodes a functional sialidase. Its cytosolic localization was demonstrated by cell fractionation experiments.
基因ID	4759

基因名	NEU2
Swiss	Q9Y3R4
别名	NEU2;SIAL2

产品验证



Western blot analysis of NEU2 expressed in Raji using NEU2 Rabbit pAb at 1:1000. Secondary antibody: HRP Goat Anti-Rabbit IgG (H+L) at 1:5000. Lysates/proteins: 30ug per lane. Blocking buffer: 5% non-fat dry milk in TBST. Detection: ECL Enhanced Kit. Exposure time: 120s.

实验步骤

访问官网浏览详情: www.ablybio.cn