

TRPC6 Rabbit pAb

货号: **AYP16076**

产品信息

反应	Human,Mouse,Rat
宿主	Rabbit
克隆性	Polyclonal
预测反应	
应用	WB IHC
推荐浓度	WB: 1:500 - 1:1000 IHC: 1:50 - 1:200
理论分子量	93kDa/100kDa/106kDa
实测分子量	106KDa
形式	Liquid
保存条件	Store at -20°C. Avoid freeze / thaw cycles. Buffer: PBS with 0.02% sodium azide,50% glycerol,pH7.3.
偶联物	Unconjugated
阳性对照	Mouse pancreas,Rat brain
细胞定位	Membrane,Multi-pass membrane protein
纯化	Affinity purification

抗原信息

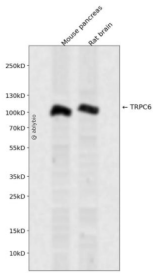
抗原信息	A synthetic peptide corresponding to a sequence within amino acids 500-600 of human TRPC6 (NP_004612.2).
序列	SWVIGMIWAECKEIIWTQGPKEYLFELWNMLDFGMLAIFAASFIARFMAFWHASKAQSIIDANDTLKDLTKVTLGDNVKYYNLARIKWDPSPDQIISEGLYA

靶点信息

研究背景	The protein encoded by this gene forms a receptor-activated calcium channel in the cell membrane. The channel is activated by diacylglycerol and is thought to be under the control of a phosphatidylinositol second messenger system. Activation of this channel occurs independently of protein kinase C and is not triggered by low levels of intracellular calcium. Defects in this gene are a cause of focal segmental glomerulosclerosis 2 (FSGS2).
------	---

基因ID	7225
基因名	TRPC6
Swiss	Q9Y210
别名	TRPC6;FSGS2;TRP6

产品验证



Western blot analysis of TRPC6 expressed in Mouse pancreas,Rat brain using TRPC6 Rabbit pAb at 1:1000. Secondary antibody: HRP Goat Anti-Rabbit IgG (H+L) at 1:5000. Lysates/proteins: 30ug per lane. Blocking buffer: 5% non-fat dry milk in TBST. Detection: ECL Enhanced Kit. Exposure time: 120s.

实验步骤

访问官网浏览详情: www.ablybio.cn