

SRM Rabbit pAb

货号: **AYP16075**

产品信息

反应	Human,Mouse,Rat
宿主	Rabbit
克隆性	Polyclonal
预测反应	
应用	WB
推荐浓度	WB: 1:500 - 1:2000
理论分子量	33kDa
实测分子量	35kDa
形式	Liquid
保存条件	Store at -20°C. Avoid freeze / thaw cycles. Buffer: PBS with 0.02% sodium azide,50% glycerol,pH7.3.
偶联物	Unconjugated
阳性对照	22Rv1,HepG2,HeLa,Mouse liver,Mouse stomach,Mouse small intestine,Rat liver
细胞定位	cytosol
纯化	Affinity purification

抗原信息

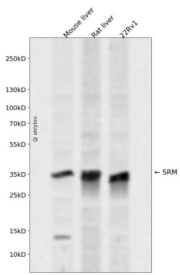
抗原信息	Recombinant fusion protein containing a sequence corresponding to amino acids 1-302 of human SRM (NP_003123.2).
序列	MEPGPDGPAASGPAAREGWFRETCSLWPGQALSQVEQLLHRRRSRYQDILVFRSKTYGNVLVLDGVIQCTERDEFSYQ EMIANLPLCSPNPRKVLIIIGGGDGGVLRVVKHPSVESVQCEIDEDVIQVSKKFLPGMAIGYSSKLTLLHVGDFEFMK QNQDAFDVIIITDSSDPMGPAESLFKESYYQLMKTALKEDGVLCCQGEQWLHLDLIKEMRQFCQSLFPVVAYAYCTIPTYP SGQIGFMLCSKNPSTNFQEPVQPLTQQQVAQMQLKYNSDVHRAAFVLPEFARKALNDVS

靶点信息

研究背景	The polyamines putrescine, spermine, and spermidine are ubiquitous polycationic mediators of cell growth and differentiation. Spermidine synthase is one of four enzymes in the polyamine-biosynthetic pathway and carries out the final step of spermidine biosynthesis. This enzyme catalyzes the conversion of putrescine to spermidine using decarboxylated S-adenosylmethionine as the cofactor.
------	---

基因ID	6723
基因名	SRM
Swiss	P19623
别名	SRM;PAPT;SPDSY;SPS1;SRML1

产品验证



Western blot analysis of SRM expressed in Mouse liver,Rat liver,22Rv1 using SRM Rabbit pAb at 1:1000. Secondary antibody: HRP Goat Anti-Rabbit IgG (H+L) at 1:5000. Lysates/proteins: 30ug per lane. Blocking buffer: 5% non-fat dry milk in TBST. Detection: ECL Enhanced Kit. Exposure time: 120s.

实验步骤

访问官网浏览详情: www.ablybio.cn