

Septin 6 Rabbit pAb

货号: **AYP16067**

产品信息

反应	Human,Mouse,Rat
宿主	Rabbit
克隆性	Polyclonal
预测反应	
应用	WB
推荐浓度	WB: 1:500 - 1:2000
理论分子量	29kDa/48kDa/49kDa
实测分子量	50KDa
形式	Liquid
保存条件	Store at -20°C. Avoid freeze / thaw cycles. Buffer: PBS with 0.02% sodium azide,50% glycerol,pH7.3.
偶联物	Unconjugated
阳性对照	Rat lung
细胞定位	Chromosome,Cleavage furrow,Cytoplasm,Midbody,centromere,cytoskeleton,kinetochore,spindle
纯化	Affinity purification

抗原信息

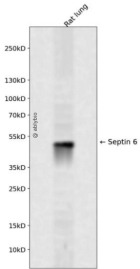
抗原信息	Recombinant fusion protein containing a sequence corresponding to amino acids 350-434 of human Septin 6 (NP_055944.2).
序列	VKEKEAELKEAEKELHEKFDRLKKLHQDEKKKLEDKKKSLDDEVNAFKQRKTAELLQSQGSQAGGSQTLKRDKEKKNNPWLCTE

靶点信息

研究背景	This gene is a member of the septin family of GTPases. Members of this family are required for cytokinesis. One version of pediatric acute myeloid leukemia is the result of a reciprocal translocation between chromosomes 11 and X, with the breakpoint associated with the genes encoding the mixed-lineage leukemia and septin 2 proteins. This gene encodes four transcript variants encoding three distinct isoforms. An additional transcript variant has been identified, but its biological validity has not been determined.
基因ID	23157

基因名	SEPT6
Swiss	Q14141
别名	SEPT6;SEP2;SEPT2;septin-6

产品验证



Western blot analysis of Septin 6 expressed in Rat lung using Septin 6 Rabbit pAb at 1:1000. Secondary antibody: HRP Goat Anti-Rabbit IgG (H+L) at 1:5000. Lysates/proteins: 30ug per lane. Blocking buffer: 5% non-fat dry milk in TBST. Detection: ECL Enhanced Kit. Exposure time: 120s.

实验步骤

访问官网浏览详情: www.ablybio.cn