

IL36A Rabbit pAb

货号: **AYP16065**

产品信息

反应	Human,Mouse,Rat
宿主	Rabbit
克隆性	Polyclonal
预测反应	
应用	WB
推荐浓度	WB: 1:500 - 1:2000
理论分子量	17kDa
实测分子量	23kDa
形式	Liquid
保存条件	Store at -20°C. Avoid freeze / thaw cycles. Buffer: PBS with 0.02% sodium azide,50% glycerol,pH7.3.
偶联物	Unconjugated
阳性对照	HT-29,BT-474,SW480,A-431,HeLa,Mouse skin,Mouse heart,Rat liver
细胞定位	Secreted
纯化	Affinity purification

抗原信息

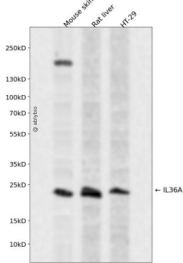
抗原信息	Recombinant fusion protein containing a sequence corresponding to amino acids 1-158 of human IL36A (NP_055255.1).
序列	MEKALKIDTPQQGSIQDINHRVWVLDQDTLIAVPRKDRMSPVTIALISCRHVETLEKDRGNPIYLGLNGLNLCLMCAKVGDPPTLQLKEKDIMDLYNQPEPVKSFLFYHSQSGRNSTFESVAFPGWFIASSEGCGPLILTQELGKANTTDFGLTMLF

靶点信息

研究背景	The protein encoded by this gene is a cytokine that can activate NF-kappa-B and MAPK signaling pathway to generate an inflammatory response. The encoded protein functions primarily in skin and demonstrates increased expression in psoriasis. In addition, decreased expression of this gene has been linked to a poor prognosis in both hepatocellular carcinoma and colorectal cancer patients.
基因ID	27179

基因名	IL36A
Swiss	Q9UHA7
别名	IL36A;FIL1;FIL1(EPSILON);FIL1E;IL-1F6;IL1(EPSILON);IL1F6

产品验证



Western blot analysis of IL36A expressed in Mouse skin,Rat liver,HT-29 using IL36A Rabbit pAb at 1:1000. Secondary antibody: HRP Goat Anti-Rabbit IgG (H+L) at 1:5000. Lysates/proteins: 30ug per lane. Blocking buffer: 5% non-fat dry milk in TBST. Detection: ECL Enhanced Kit. Exposure time: 120s.

实验步骤

访问官网浏览详情: www.ablybio.cn