

# MS4A12 Rabbit pAb

货号: **AYP16062**

## 产品信息

反应	Human
宿主	Rabbit
克隆性	Polyclonal
预测反应	
应用	WB
推荐浓度	<b>WB:</b> 1:500 - 1:2000
理论分子量	23kDa/28kDa
实测分子量	28kDa
形式	Liquid
保存条件	Store at -20°C. Avoid freeze / thaw cycles. Buffer: PBS with 0.02% sodium azide,50% glycerol,pH7.3.
偶联物	Unconjugated
阳性对照	HeLa,NCI-H460,BT-474
细胞定位	Membrane,Multi-pass membrane protein
纯化	Affinity purification

## 抗原信息

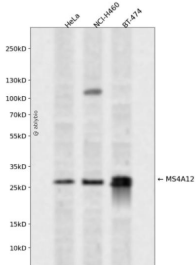
抗原信息	Recombinant fusion protein containing a sequence corresponding to amino acids 1-90 of human MS4A12 (NP_060186.2).
序列	MMSSKPTSHAEVNETIPNPYPSSFMAGFQQPLGSINLENQAQGAQRAQPYGITSPGIFASSQPGQGNIQMINPSVGTA VMNFKEEAKA

## 靶点信息

研究背景	The protein encoded by this gene is a cell surface protein found primarily in the apical membrane of colonicocytes. Silencing of this gene in colon cancer cells inhibits the proliferation, cell motility, and chemotactic invasion of cells. This gene is part of a cluster of similar genes found on chromosome 11. Two transcript variants encoding different isoforms have been found for this gene.
基因ID	54860

基因名	MS4A12
Swiss	Q9NXJ0
别名	MS4A12;Ms4a10

## 产品验证



Western blot analysis of MS4A12 expressed in HeLa, NCI-H460, BT-474 using MS4A12 Rabbit pAb at 1:1000. Secondary antibody: HRP Goat Anti-Rabbit IgG (H+L) at 1:5000. Lysates/proteins: 30ug per lane. Blocking buffer: 5% non-fat dry milk in TBST. Detection: ECL Enhanced Kit. Exposure time: 120s.

## 实验步骤

访问官网浏览详情: [www.ablybio.cn](http://www.ablybio.cn)