

# SEMA4C Rabbit pAb

货号: **AYP16060**

## 产品信息

反应	Human,Mouse
宿主	Rabbit
克隆性	Polyclonal
预测反应	
应用	WB
推荐浓度	<b>WB:</b> 1:500 - 1:2000
理论分子量	92kDa
实测分子量	110kDa
形式	Liquid
保存条件	Store at -20°C. Avoid freeze / thaw cycles. Buffer: PBS with 0.02% sodium azide,50% glycerol,pH7.3.
偶联物	Unconjugated
阳性对照	MCF7,BT-474,Mouse heart
细胞定位	Cell junction,Cytoplasmic vesicle,Single-pass type I membrane protein,postsynaptic cell membrane,postsynaptic density,secretory vesicle,synapse,synaptic vesicle membrane
纯化	Affinity purification

## 抗原信息

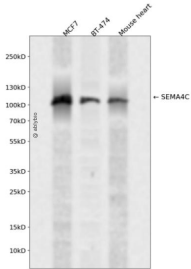
抗原信息	Recombinant fusion protein containing a sequence corresponding to amino acids 749-833 of human SEMA4C (NP_060259.4).
序列	HARCQPGGGPPSPPPGIPGQPLPSPTRLHLGGGRNSNANGYVRLQLGGEDRGGLGHPLPELADELRRKLQQRQPLPDSNPEESSV

## 靶点信息

研究背景	Cell surface receptor for PLXNB2 that plays an important role in cell-cell signaling. PLXNB2 binding promotes downstream activation of RHOA and phosphorylation of ERBB2 at 'Tyr-1248'. Required for normal brain development, axon guidance and cell migration (By similarity). Probable signaling receptor which may play a role in myogenic differentiation through activation of the stress-activated MAPK cascade.
基因ID	54910

基因名	SEMA4C
Swiss	Q9C0C4
别名	SEMA4C;M-SEMA-F;SEMACL1;SEMAF;SEMAI

## 产品验证



Western blot analysis of SEMA4C expressed in MCF7,BT-474,Mouse heart using SEMA4C Rabbit pAb at 1:1000. Secondary antibody: HRP Goat Anti-Rabbit IgG (H+L) at 1:5000. Lysates/proteins: 30ug per lane. Blocking buffer: 5% non-fat dry milk in TBST. Detection: ECL Enhanced Kit. Exposure time: 120s.

## 实验步骤

访问官网浏览详情: [www.ablybio.cn](http://www.ablybio.cn)