

# CEP55 Rabbit pAb

货号: **AYP16059**

## 产品信息

反应	Human,Mouse,Rat
宿主	Rabbit
克隆性	Polyclonal
预测反应	
应用	WB IF/ICC
推荐浓度	<b>WB:</b> 1:500 - 1:2000 <b>IF/ICC:</b> 1:50 - 1:200
理论分子量	46kDa/54kDa
实测分子量	60kDa
形式	Liquid
保存条件	Store at -20°C. Avoid freeze / thaw cycles. Buffer: PBS with 0.02% sodium azide,50% glycerol,pH7.3.
偶联物	Unconjugated
阳性对照	TE-1
细胞定位	Cleavage furrow,Cytoplasm,Midbody,centriole,centrosome,cytoskeleton,microtubule organizing center
纯化	Affinity purification

## 抗原信息

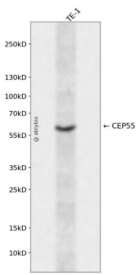
抗原信息	Recombinant fusion protein containing a sequence corresponding to amino acids 1-260 of human CEP55 ( NP_060601.3).
序列	MSSRSTKDLIKSWGSKPSNSKSETTLEKLGKGEIAHLKTSVDEITSGKGLTDKERHRLLKIRVLEAEKEKNAYQLTEKDKE IQRLRDQLKARYSTTALLEQLEETTREGERRQVLKALSEEKDVLKQQLSAATSRIAELESKTNTLRLSQTVPNCFNSSINNI HEMEIQLKDALEKNQQWLVDYDQQREVYVKGLLAKIFELEKKTETAHSLPQQTKKPESEGYLQEEKQKCYNDLLASAKKDL EVERQTITQLSF

## 靶点信息

研究背景	Plays a role in mitotic exit and cytokinesis. Recruits PDCD6IP and TSG101 to midbody during cytokinesis. Required for successful completion of cytokinesis. Not required for microtubule nucleation. Plays a role in the development of the brain and kidney.
------	---

基因ID	55165
基因名	CEP55
Swiss	Q53EZ4
别名	CEP55;C10orf3;CT111;URCC6

## 产品验证



Western blot analysis of CEP55 expressed in TE-1 using CEP55 Rabbit pAb at 1:1000. Secondary antibody: HRP Goat Anti-Rabbit IgG (H+L) at 1:5000. Lysates/proteins: 30ug per lane. Blocking buffer: 5% non-fat dry milk in TBST. Detection: ECL Enhanced Kit. Exposure time: 120s.

## 实验步骤

访问官网浏览详情: [www.ablybio.cn](http://www.ablybio.cn)