

SMOC1 Rabbit pAb

货号: **AYP16056**

产品信息

反应	Human,Mouse
宿主	Rabbit
克隆性	Polyclonal
预测反应	
应用	WB IHC
推荐浓度	WB: 1:500 - 1:1000 IHC: 1:50 - 1:200
理论分子量	48kDa
实测分子量	48KDa
形式	Liquid
保存条件	Store at -20°C. Avoid freeze / thaw cycles. Buffer: PBS with 0.01% thiomersal,50% glycerol,pH7.3.
偶联物	Unconjugated
阳性对照	Mouse liver
细胞定位	basement membrane,extracellular space
纯化	Affinity purification

抗原信息

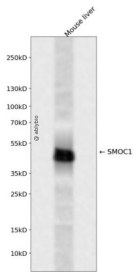
抗原信息	Recombinant fusion protein containing a sequence corresponding to amino acids 27-250 of human SMOC 1 (NP_071420.1).
序列	HRTTGPRFLISDRDPQCNLHCSRTQPKPICASDGRSYESMCEYQRAKCRDPTLGVVHRGRCKDAGQSKCRLERAQALEQ AKKPQEAVFVPECGEDGSFTQVQCHTYTYGYCWCVTPDGKPIGSSVQNKTPVCSGSVTDKPLSQGNSGRKDDGSKPTP TMETQPVFDGDEITAPTLWIKHLVIKDSKLNNTNIRNSEKVYSCDQERQSALEEAQQNPREGIPIPE

靶点信息

研究背景	This gene encodes a multi-domain secreted protein that may have a critical role in ocular and limb development. Mutations in this gene are associated with microphthalmia and limb anomalies. Alternatively spliced transcript variants encoding different isoforms have been found for this gene.
基因ID	64093

基因名	SMOC1
Swiss	Q9H4F8
别名	OAS

产品验证



Western blot analysis of SMOC1 expressed in Mouse liver using SMOC1 Rabbit pAb at 1:1000. Secondary antibody: HRP Goat Anti-Rabbit IgG (H+L) at 1:5000. Lysates/proteins: 30ug per lane. Blocking buffer: 5% non-fat dry milk in TBST. Detection: ECL Enhanced Kit. Exposure time: 120s.

实验步骤

访问官网浏览详情: www.ablybio.cn