

KDM7A Rabbit pAb

货号: **AYP16050**

产品信息

反应	Human,Mouse,Rat
宿主	Rabbit
克隆性	Polyclonal
预测反应	
应用	WB
推荐浓度	WB: 1:500 - 1:2000
理论分子量	92kDa/106kDa
实测分子量	106kDa
形式	Liquid
保存条件	Store at -20°C. Avoid freeze / thaw cycles. Buffer: PBS with 0.05% proclin300,50% glycerol,pH7.3.
偶联物	Unconjugated
阳性对照	HeLa,293T,BT-474,Mouse brain,Mouse thymus,Mouse spleen,Rat brain,Rat thymus
细胞定位	Nucleus
纯化	Affinity purification

抗原信息

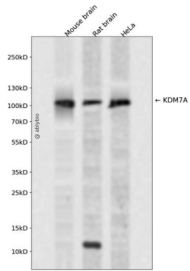
抗原信息	Recombinant fusion protein containing a sequence corresponding to amino acids 417-735 of mouse KDM 7A (NP_001028602.2).
序列	LKEDGFQPQSYLVQGVKALHTALKLWMMKELVSEHAFEIPDNVRPGHLIKELSKVIRAIIEEENGKPVKSQGIPSVCPVSRPS NEASPPYHSRRKMRKLRDHNVRTPSNLDILELHTREVLRLEMCPWEEDLLSSKLNKFNKHLQPSSTVPEWRAKDNDLR LLLNTNGRIIKDERQLFADRSLYTADSENEEDKKPTQANANMKTEQSSGREEAESQGSPKPLNRIFTSVRSELRSRPSEYSDG SDESSESGPDCTALKINFATEDSESSGDEKKHEITSHFKEESDIVRNLLQKSQKPSRQEIPVKRECPSTSTSTEEAI

靶点信息

研究背景	Enables histone H3-methyl-lysine-9 demethylase activity and histone H3-tri/di-methyl-lysine-27 demethylase activity. Involved in histone H3-K27 demethylation; histone H3-K9 demethylation; and positive regulation of transcription, DNA-templated. Predicted to be located in nucleolus and nucleoplasm. Human ortholog(s) of this gene implicated in melanoma. Orthologous to human KDM7A (lysine demethylase 7A).
------	---

基因ID	338523
基因名	
Swiss	
别名	KDM7A;JHDM1D

产品验证



Western blot analysis of KDM7A expressed in Mouse brain,Rat brain,HeLa using KDM7A Rabbit pAb at 1:1000. Secondary antibody: HRP Goat Anti-Rabbit IgG (H+L) at 1:5000. Lysates/proteins: 30ug per lane . Blocking buffer: 5% non-fat dry milk in TBST. Detection: ECL Enhanced Kit. Exposure time: 120s.

实验步骤

访问官网浏览详情: www.ablybio.cn