

# ARL6 Rabbit pAb

货号: **AYP16049**

## 产品信息

反应	Human,Mouse
宿主	Rabbit
克隆性	Polyclonal
预测反应	
应用	WB IHC
推荐浓度	<b>WB:</b> 1:500 - 1:2000 <b>IHC:</b> 1:50 - 1:100
理论分子量	21kDa
实测分子量	21kDa
形式	Liquid
保存条件	Store at -20°C. Avoid freeze / thaw cycles. Buffer: PBS with 0.02% sodium azide,50% glycerol,pH7.3.
偶联物	Unconjugated
阳性对照	293T,Mouse kidney,Mouse brain,Mouse testis
细胞定位	Cell projection,Cytoplasm,Cytoplasmic side,Peripheral membrane protein,cilium axoneme,cilium basal body,cilium membrane,cytoskeleton
纯化	Affinity purification

## 抗原信息

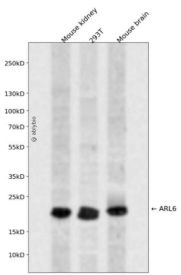
抗原信息	Recombinant fusion protein containing a sequence corresponding to amino acids 1-186 of human ARL6 ( NP_115522.1).
序列	MGLLDRLSVLLGLKKKEVHVLCLGLDNSGKTTIINKLKPSNAQSQNILPTIGFSIEKFKSSSLSTVFDMSGQGGRYRNLWEH YYKEGQAIIFVIDSSDRLRMVVAKEELDTLLNHPDIKHRRIPILFFANKMDLRDAVTSVKVSQLLCLENIKDKPWHICASDAIK GEGLEQEGVDWLQDQIQTVKT

## 靶点信息

研究背景	The protein encoded by this gene belongs to the ARF-like (ADP ribosylation factor-like) sub-family of the ARF family of GTP-binding proteins which are involved in regulation of intracellular traffic. Mutations in this gene are associated with Bardet-Biedl syndrome (BBS). Alternative splicing results in multiple transcript variants of this gene. A vision-specific transcript encoding a different protein has been described (PMID: 20 333246).
------	--

基因ID	84100
基因名	ARL6
Swiss	Q9H0F7
别名	ARL6;BBS3;RP55

### 产品验证



Western blot analysis of ARL6 expressed in Mouse kidney,293T,Mouse brain using ARL6 Rabbit pAb at 1:1000. Secondary antibody: HRP Goat Anti-Rabbit IgG (H+L) at 1:5000. Lysates/proteins: 30ug per lane. Blocking buffer: 5% non-fat dry milk in TBST. Detection: ECL Enhanced Kit. Exposure time: 120s.

### 实验步骤

访问官网浏览详情: [www.ablybio.cn](http://www.ablybio.cn)