

# MRPL12 Rabbit pAb

货号: **AYP16033**

## 产品信息

反应	Human
宿主	Rabbit
克隆性	Polyclonal
预测反应	
应用	WB
推荐浓度	<b>WB:</b> 1:500 - 1:2000
理论分子量	21kDa
实测分子量	21kDa
形式	Liquid
保存条件	Store at -20°C. Avoid freeze / thaw cycles. Buffer: PBS with 0.02% sodium azide,50% glycerol,pH7.3.
偶联物	Unconjugated
阳性对照	A-431,22Rv1,A-549
细胞定位	Mitochondrion
纯化	Affinity purification

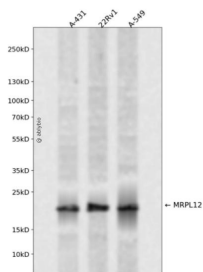
## 抗原信息

抗原信息	Recombinant fusion protein containing a sequence corresponding to amino acids 1-198 of human MRPL12 (NP_002940.2).
序列	MLPAAARPLWGPCLGLRAAAFRLARRQVPCVCAVRHMRSSGHQRCEALAGAPLDNAPKEYPPKIQQLVQDIASLTLLLEISD LNELLKKTLLKIQDVGLVPMGGVMSGAVPAAAAQEAVEEDIPIAKERTHTFTVRLTEAKPVDKVKLIKEIKNYIQGINLVQAKKLV ESLPQEIKANVAKAEAEKIKAALEAVGGTVVLE

## 靶点信息

研究背景	Mammalian mitochondrial ribosomal proteins are encoded by nuclear genes and help in protein synthesis within the mitochondrion. Mitochondrial ribosomes (mitoribosomes) consist of a small 28S subunit and a large 39S subunit. They have an estimated 75% protein to rRNA composition compared to prokaryotic ribosomes, where this ratio is reversed. Another difference between mammalian mitoribosomes and prokaryotic ribosomes is that the latter contain a 5S rRNA. Among different species, the proteins comprising the mitoribosome differ greatly in sequence, and sometimes in biochemical properties, which prevents easy recognition by sequence homology. This gene encodes a 39S subunit protein which forms homodimers. In prokaryotic ribosomes, two L7/L12 dimers and one L10 protein form the L8 protein complex.
基因ID	6182
基因名	MRPL12
Swiss	P52815
别名	MRPL12;5c5-2;L12mt;MRP-L31/34;MRPL7;MRPL7/L12;RPML12

## 产品验证



Western blot analysis of MRPL12 expressed in A-431,22Rv1,A-549 using MRPL12 Rabbit pAb at 1:1000 . Secondary antibody: HRP Goat Anti-Rabbit IgG (H+L) at 1:5000. Lysates/proteins: 30ug per lane. Blocking buffer: 5% non-fat dry milk in TBST. Detection: ECL Enhanced Kit. Exposure time: 120s.

## 实验步骤

访问官网浏览详情: [www.ablybio.cn](http://www.ablybio.cn)