

UBE2D4 Rabbit pAb

货号: AYP16030

产品信息

反应	Human,Mouse,Rat
宿主	Rabbit
克隆性	Polyclonal
预测反应	
应用	WB
推荐浓度	WB: 1:500 - 1:2000
理论分子量	16kDa
实测分子量	17kDa
形式	Liquid
保存条件	Store at -20°C. Avoid freeze / thaw cycles. Buffer: PBS with 0.02% sodium azide,50% glycerol,pH7.3.
偶联物	Unconjugated
阳性对照	BT-474,HepG2,MCF7,Mouse liver,Mouse skeletal muscle,Mouse kidney,Rat lung,Rat liver
细胞定位	nucleus
纯化	Affinity purification

抗原信息

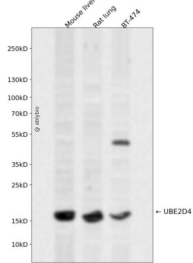
抗原信息	Recombinant fusion protein containing a sequence corresponding to amino acids 1-147 of human UBE2D4 (NP_057067.1).
序列	MALKRIQKELTDLQRDPPAQCAGPVGDDLFHWQATIMGPNDSPYQGGVFFLTIHFPTDYPFKPPKVAFTTKIYHPNINSN GSICLDILRSQWSPALTVSKVLLSICSLLCDPNPDDPLVPEIAHTYKADREKYNRLAREWTQKYAM

靶点信息

研究背景	Ube2D4 is an E2 enzyme, which is part of the E1, E2, and E3 cascade responsible for ubiquitination of protein substrates. Ube2D4 has been linked to cadmium toxicity. It might also play a role in LDL cholesterol receptor ubiquitination in an Idol-dependent fashion.
基因ID	51619

基因名	UBE2D4
Swiss	Q9Y2X8
别名	UBE2D4;HBUCE1

产品验证



Western blot analysis of UBE2D4 expressed in Mouse liver,Rat lung,BT-474 using UBE2D4 Rabbit pAb at 1:1000. Secondary antibody: HRP Goat Anti-Rabbit IgG (H+L) at 1:5000. Lysates/proteins: 30ug per lane. Blocking buffer: 5% non-fat dry milk in TBST. Detection: ECL Enhanced Kit. Exposure time: 120s.

实验步骤

访问官网浏览详情: www.ablybio.cn