

AP1M2 Rabbit pAb

货号: **AYP16029**

产品信息

反应	Human,Mouse
宿主	Rabbit
克隆性	Polyclonal
预测反应	
应用	WB IF/ICC
推荐浓度	WB: 1:500 - 1:2000 IF/ICC: 1:50 - 1:200
理论分子量	48kDa
实测分子量	48kDa
形式	Liquid
保存条件	Store at -20°C. Avoid freeze / thaw cycles. Buffer: PBS with 0.02% sodium azide,50% glycerol,pH7.3.
偶联物	Unconjugated
阳性对照	22Rv1,BT-474,HepG2,Mouse kidney,Mouse lung,Mouse small intestine
细胞定位	Cytoplasmic side,Cytoplasmic vesicle,Golgi apparatus,Peripheral membrane protein,clathrin-coated vesicle membrane
纯化	Affinity purification

抗原信息

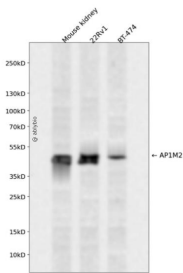
抗原信息	Recombinant fusion protein containing a sequence corresponding to amino acids 164-423 of human AP1M2 (NP_005489.2).
序列	IKYKKNEVFIDVIESVLLVNANGSVLLSEIVGTIKLKVFLSGMPELRLGLNDRVLFELTGRSKNKSVLEEDVKFHQCVRLSRF DNDRTISFIPDGFELMSYRLSTQVKPLIWIESVIEKFSHSRVEIMVKAKGQFKKQSVANGVEISVPVPSDADSPRFKTSV GSAKYVPERNVVIWSIKSFPGGKEYLMRAHFGLPSVEKEEVEGRPPIGVKFEIPYFTVSGIQVRYMKIIEKSGYQALPWVRYIT QSGDYQLRTS

靶点信息

研究背景	This gene encodes a subunit of the heterotetrameric adaptor-related protein complex 1 (AP-1), which belongs to the adaptor complexes medium subunits family. This protein is capable of interacting with tyrosine-based sorting signals. Alternative splicing results in multiple transcript variants.
------	--

基因ID	10053
基因名	AP1M2
Swiss	Q9Y6Q5
别名	AP1M2;AP1-mu2;HSMU1B;MU-1B;MU1B;mu2

产品验证



Western blot analysis of AP1M2 expressed in Mouse kidney,22Rv1,BT-474 using AP1M2 Rabbit pAb at 1:1000. Secondary antibody: HRP Goat Anti-Rabbit IgG (H+L) at 1:5000. Lysates/proteins: 30ug per lane. Blocking buffer: 5% non-fat dry milk in TBST. Detection: ECL Enhanced Kit. Exposure time: 120s.

实验步骤

访问官网浏览详情: www.ablybio.cn