

# BTLA Rabbit pAb

货号: **AYP16016**

## 产品信息

反应	Mouse,Rat
宿主	Rabbit
克隆性	Polyclonal
预测反应	
应用	WB
推荐浓度	<b>WB:</b> 1:1000 - 1:4000
理论分子量	27kDa/32kDa
实测分子量	33kDa
形式	Liquid
保存条件	Store at -20°C. Avoid freeze / thaw cycles. Buffer: PBS with 0.02% sodium azide,50% glycerol,pH7.3.
偶联物	Unconjugated
阳性对照	Mouse spleen,Mouse thymus,Rat lung
细胞定位	Membrane,Single-pass type I membrane protein
纯化	Affinity purification

## 抗原信息

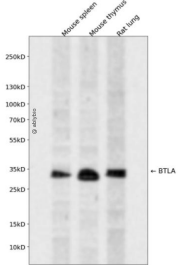
抗原信息	Recombinant fusion protein containing a sequence corresponding to amino acids 31-241 of human BTLA ( NP_001078826.1).
序列	KESCDVQLYIKRQSEHSILAGDPFELECPVKYCANRPHVTWCKLNGTTCVKLEDRQTSWKEEKNISFFILHFEPVLPNDNGS YRCSANFQSNLIESHSTTLTYVTGKQNELSDTAGREINLVD AHLKSEQTEASTRQNSQVLLSETGIYDNDPDL CFRMQEGSE VYSNPCLEENKPGIVYASLNHHSVIGPNSRLARNVKEAPTEYASICVRS

## 靶点信息

研究背景	This gene encodes a member of the immunoglobulin superfamily. The encoded protein contains a single immunoglobulin (Ig) domain and is a receptor that relays inhibitory signals to suppress the immune response. Alternative splicing results in multiple transcript variants. Polymorphisms in this gene have been associated with an increased risk of rheumatoid arthritis.
基因ID	151888

基因名	BTLA
Swiss	Q7Z6A9
别名	BTLA;BTLA1;CD272

## 产品验证



Western blot analysis of BTLA expressed in Mouse spleen, Mouse thymus, Rat lung using BTLA Rabbit pAb at 1:1000. Secondary antibody: HRP Goat Anti-Rabbit IgG (H+L) at 1:5000. Lysates/proteins: 30ug per lane. Blocking buffer: 5% non-fat dry milk in TBST. Detection: ECL Enhanced Kit. Exposure time: 120s.

## 实验步骤

访问官网浏览详情: [www.ablybio.cn](http://www.ablybio.cn)