

UBE2U Rabbit pAb

货号: **AYP16015**

产品信息

反应	Human,Mouse
宿主	Rabbit
克隆性	Polyclonal
预测反应	
应用	WB IHC
推荐浓度	WB: 1:500 - 1:2000 IHC: 1:50 - 1:100
理论分子量	26kDa/37kDa
实测分子量	42kDa
形式	Liquid
保存条件	Store at -20°C. Avoid freeze / thaw cycles. Buffer: PBS with 0.02% sodium azide,50% glycerol,pH7.3.
偶联物	Unconjugated
阳性对照	U-251MG,LO2,NCI-H460
细胞定位	
纯化	Affinity purification

抗原信息

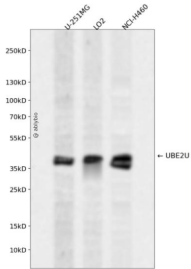
抗原信息	Recombinant fusion protein containing a sequence corresponding to amino acids 1-226 of human UBE2U (NP_689702.1).
序列	MHGRAYLLLRDFCDLKENNYKGITAKPVSEDMMEWEVEIEGLQNSVWQGLVFLTIHFTSEYNYAPPVVKFITIPFHPNV DPHTGQPCIDFLDNPEKWNTNYTLSSILLALQVMLSNPVLENPVNLEAARILVKDESLYRTLRLFNRLQMKDSDSQELPKD PRKCIRPIKTTSFSDYYQTWSRIATSKATEYYRTPLLKVPNFIGQYYKWKKMDLQHQKEWNLK

靶点信息

研究背景	Catalyzes the covalent attachment of ubiquitin to other proteins.
基因ID	148581
基因名	UBE2U

Swiss	Q5VVX9
别名	UBE2U

产品验证



Western blot analysis of UBE2U expressed in U-251MG, LO2, NCI-H460 using UBE2U Rabbit pAb at 1:1000. Secondary antibody: HRP Goat Anti-Rabbit IgG (H+L) at 1:5000. Lysates/proteins: 30ug per lane. Blocking buffer: 5% non-fat dry milk in TBST. Detection: ECL Enhanced Kit. Exposure time: 120s.

实验步骤

访问官网浏览详情: www.ablybio.cn