

EME1 Rabbit pAb

货号: **AYP16014**

产品信息

反应	Mouse,Rat
宿主	Rabbit
克隆性	Polyclonal
预测反应	
应用	WB
推荐浓度	WB: 1:500 - 1:2000
理论分子量	63kDa/64kDa
实测分子量	63kDa
形式	Liquid
保存条件	Store at -20°C. Avoid freeze / thaw cycles. Buffer: PBS with 0.02% sodium azide,50% glycerol,pH7.3.
偶联物	Unconjugated
阳性对照	Mouse thymus,Rat thymus
细胞定位	Nucleus,nucleolus
纯化	Affinity purification

抗原信息

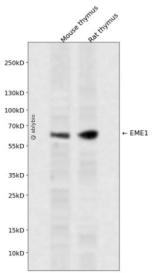
抗原信息	Recombinant fusion protein containing a sequence corresponding to amino acids 1-320 of human EME1 (NP_689676.2).
序列	MALKSSPSLDSGSDSEELPTFAFLKKEPSSTKRRQPEREEKIVVVDISDCEASCPPAPELFSPPVPEIAETVTQTQPVRLLSSESEDEEEFIPLAQRLTCKFLTHKQLSPEDSSSPVKSVDHQNEGASCDWKKPFKIPVPLHDTPERSAADNKDLILDPCCLPAYLSTCPGQSSSLAVTKNSDILPPQKTKPSQKVQGRGSHGCRQQRQARQKESTLRRQERKNAALVTRMKAQRPEECLKHIIIVLDPVLLQMEGGGQLLQALQTMERCRCVIEAQAVPCSVTWRRRAGPSEDREDWVEEPTVLVLLRAEA

靶点信息

研究背景	This gene encodes a protein that complexes with methyl methanesulfonate-sensitive UV-sensitive 81 protein to form an endonuclease complex. The encoded protein interacts with specific DNA structures including nicked Holliday junctions, 3'-flap structures and aberrant replication fork structures. This protein may be involved in repairing DNA damage and in maintaining genomic stability. Alternative splicing results in multiple transcript variants.
------	--

基因ID	146956
基因名	EME1
Swiss	Q96AY2
别名	EME1;MMS4L;SLX2A

产品验证



Western blot analysis of EME1 expressed in Mouse thymus,Rat thymus using EME1 Rabbit pAb at 1:1000. Secondary antibody: HRP Goat Anti-Rabbit IgG (H+L) at 1:5000. Lysates/proteins: 30ug per lane. Blocking buffer: 5% non-fat dry milk in TBST. Detection: ECL Enhanced Kit. Exposure time: 120s.

实验步骤

访问官网浏览详情: www.ablybio.cn