

CLTB Rabbit pAb

货号: **AYP16004**

产品信息

反应	Human,Mouse,Rat
宿主	Rabbit
克隆性	Polyclonal
预测反应	
应用	WB IF/ICC
推荐浓度	WB: 1:500 - 1:2000 IF/ICC: 1:50 - 1:200
理论分子量	23kDa/25kDa
实测分子量	30kDa
形式	Liquid
保存条件	Store at -20°C. Avoid freeze / thaw cycles. Buffer: PBS with 0.02% sodium azide,50% glycerol,pH7.3.
偶联物	Unconjugated
阳性对照	LO2,A-549,MCF7,SW480,NIH/3T3,Mouse kidney,Mouse lung
细胞定位	Cytoplasmic side,Cytoplasmic vesicle membrane,Membrane,Peripheral membrane protein,coated pit
纯化	Affinity purification

抗原信息

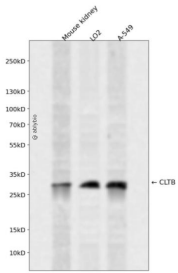
抗原信息	Recombinant fusion protein containing a sequence corresponding to amino acids 1-211 of human CLTB (NP_001825.1).
序列	MADDFGFFSSSESGAPEAAEEDPAAAFLAQQESEIAGIENDEGFGAPAGSHAAPAQPPTSGAGSEDMGTTVNGDVFQ EANGPADGYAAIAQADRLTQEPESIRKWREEQRKRLQELDAASKVTEQEWREKAKKDLEEWNRQSEQVEKNKINNRAS EEAFVKESKEETPGTEWEKVAQLCDFNPKSSKQCKDVSRLRSVLSLQKTPLSR

靶点信息

研究背景	Clathrin is a large, soluble protein composed of heavy and light chains. It functions as the main structural component of the lattice-type cytoplasmic face of coated pits and vesicles which entrap specific macromolecules during receptor-mediated endocytosis. This gene encodes one of two clathrin light chain proteins which are believed to function as regulatory elements. Alternative splicing results in multiple transcript variants.
------	--

基因ID	1212
基因名	CLTB
Swiss	P09497
别名	CLTB;LCB

产品验证



Western blot analysis of CLTB expressed in Mouse kidney, LO2, A-549 using CLTB Rabbit pAb at 1:1000. Secondary antibody: HRP Goat Anti-Rabbit IgG (H+L) at 1:5000. Lysates/proteins: 30ug per lane. Blocking buffer: 5% non-fat dry milk in TBST. Detection: ECL Enhanced Kit. Exposure time: 120s.

实验步骤

访问官网浏览详情: www.ablybio.cn