

# POLL Rabbit pAb

货号: **AYP16003**

## 产品信息

反应	Human,Mouse,Rat
宿主	Rabbit
克隆性	Polyclonal
预测反应	
应用	WB
推荐浓度	<b>WB:</b> 1:500 - 1:2000
理论分子量	33kDa/63kDa
实测分子量	63kDa
形式	Liquid
保存条件	Store at -20°C. Avoid freeze / thaw cycles. Buffer: PBS with 0.02% sodium azide,50% glycerol,pH7.3.
偶联物	Unconjugated
阳性对照	MCF7,HL-60,A-549,NCI-H460,Rat liver
细胞定位	Nucleus
纯化	Affinity purification

## 抗原信息

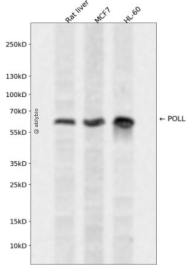
抗原信息	Recombinant fusion protein containing a sequence corresponding to amino acids 421-575 of human POLL (NP_037406.1).
序列	GKATCGDVDVLIHPDGRSHRGIFSRLLDSLREQEFLTDDLVSQEENGQQQKYLGVCRPLPGPGRRRHRLDIIVVPYSEFACALLYFTGSAHFNRSMRALAKTKGMSLSEHALSTAVVRNTHGCKVGPGRVLPPTTEKDVFRLLGLPYREPAERDW

## 靶点信息

研究背景	This gene encodes a DNA polymerase. DNA polymerases catalyze DNA-template-directed extension of the 3'-end of a DNA strand. This particular polymerase, which is a member of the X family of DNA polymerases, likely plays a role in non-homologous end joining and other DNA repair processes. Alternatively spliced transcript variants have been described.
基因ID	27343

基因名	POLL
Swiss	Q9UGP5
别名	POLL;BETAN;POLKAPPA

## 产品验证



Western blot analysis of POLL expressed in Rat liver, MCF7, HL-60 using POLL Rabbit pAb at 1:1000. Secondary antibody: HRP Goat Anti-Rabbit IgG (H+L) at 1:5000. Lysates/proteins: 30ug per lane. Blocking buffer: 5% non-fat dry milk in TBST. Detection: ECL Enhanced Kit. Exposure time: 120s.

## 实验步骤

访问官网浏览详情: [www.ablybio.cn](http://www.ablybio.cn)