

— ABLYBIO, Help Your Research



# EPHA3 Rabbit pAb

货号: **AYP16001**

## 产品信息

反应	Human,Mouse,Rat
宿主	Rabbit
克隆性	Polyclonal
预测反应	
应用	WB
推荐浓度	<b>WB:</b> 1:500 - 1:2000
理论分子量	60kDa/110kDa
实测分子量	110kDa
形式	Liquid
保存条件	Store at -20°C. Avoid freeze / thaw cycles. Buffer: PBS with 0.02% sodium azide,50% glycerol,pH7.3.
偶联物	Unconjugated
阳性对照	SW620,Mouse lung,Rat heart
细胞定位	Cell membrane,Secreted,Single-pass type I membrane protein
纯化	Affinity purification

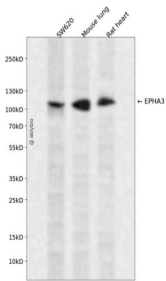
## 抗原信息

抗原信息	Recombinant fusion protein containing a sequence corresponding to amino acids 400-545 of human EPHA3 (NP_005224.2).
------	---

## 靶点信息

研究背景	This gene belongs to the ephrin receptor subfamily of the protein-tyrosine kinase family. EPH and EPH-related receptors have been implicated in mediating developmental events, particularly in the nervous system. Receptors in the EPH subfamily typically have a single kinase domain and an extracellular region containing a Cys-rich domain and 2 fibronectin type III repeats. The ephrin receptors are divided into 2 groups based on the similarity of their extracellular domain sequences and their affinities for binding ephrin-A and ephrin-B ligands. This gene encodes a protein that binds ephrin-A ligands. Two alternatively spliced transcript variants have been described for this gene.
基因ID	2042
基因名	EPA3
Swiss	P29320 ( <a href="https://www.uniprot.org/uniprotkb/P29320/entry">https://www.uniprot.org/uniprotkb/P29320/entry</a> )
别名	EK4,ETK,HEK,ETK1,HEK4,TYRO4,EPA3,EPA3 Rabbit pAb,EPH-like kinase 4,Tyrosine-protein kinase TYRO4,Tyrosine-protein kinase receptor ETK1

## 产品验证



Western blot analysis of EPA3 expressed in SW620, Mouse lung, Rat heart using EPA3 Rabbit pAb at 1:1000. Secondary antibody: HRP Goat Anti-Rabbit IgG (H+L) at 1:5000. Lysates/proteins: 30ug per lane. Blocking buffer: 5% non-fat dry milk in TBST. Detection: ECL Enhanced Kit. Exposure time: 120s.

## 实验步骤

访问官网浏览详情: [www.ablybio.cn](http://www.ablybio.cn) (<https://www.ablybio.cn/>[www.ablybio.cn](http://www.ablybio.cn))