

FECH Rabbit pAb

货号: **AYP15997**

产品信息

反应	Human,Mouse,Rat
宿主	Rabbit
克隆性	Polyclonal
预测反应	
应用	WB IHC IF/ICC
推荐浓度	WB: 1:500 - 1:2000 IHC: 1:50 - 1:100 IF/ICC: 1:50 - 1:100
理论分子量	47kDa/48kDa
实测分子量	50kDa
形式	Liquid
保存条件	Store at -20°C. Avoid freeze / thaw cycles. Buffer: PBS with 0.02% sodium azide,50% glycerol,pH7.3.
偶联物	Unconjugated
阳性对照	HepG2,HT-29,Mouse brain
细胞定位	Matrix side,Mitochondrion inner membrane,Peripheral membrane protein
纯化	Affinity purification

抗原信息

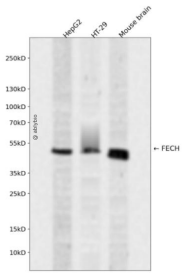
抗原信息	Recombinant fusion protein containing a sequence corresponding to amino acids 1-200 of human FECH (NP_000131.2).
序列	MRSLGANMAAALRAAGVLLRDPLASSSWRVCQPWRWKSGAAAAAVTTETAQHAQGAKPQVQPQKRKPKTGILMLNMG GPETLGDVHDFLLRFLDRDLMTLPQNKLAPPIAKRRTPKIQEQYRRIGGGSPIKIWTSKQEGEMVKLLDELSNPATPHKYY IGFRYVHPLTEEAIEEMERDGLERAIAFTQYPQYSCSTTG

靶点信息

研究背景	The protein encoded by this gene is localized to the mitochondrion, where it catalyzes the insertion of the ferrous form of iron into protoporphyrin IX in the heme synthesis pathway. Mutations in this gene are associated with erythropoietic protoporphyria. Two transcript variants encoding different isoforms have been found for this gene. A pseudogene of this gene is found on chromosome 3.
------	---

基因ID	2235
基因名	FECH
Swiss	P22830
别名	FECH;EPP;FCE

产品验证



Western blot analysis of FECH expressed in HepG2,HT-29,Mouse brain using FECH Rabbit pAb at 1:1000 . Secondary antibody: HRP Goat Anti-Rabbit IgG (H+L) at 1:5000. Lysates/proteins: 30ug per lane. Blocking buffer: 5% non-fat dry milk in TBST. Detection: ECL Enhanced Kit. Exposure time: 120s.

实验步骤

访问官网浏览详情: www.ablybio.cn