

PDC Rabbit pAb

货号: **AYP15987**

产品信息

反应	Human,Mouse,Rat
宿主	Rabbit
克隆性	Polyclonal
预测反应	
应用	WB IHC
推荐浓度	WB: 1:500 - 1:2000 IHC: 1:50 - 1:200
理论分子量	22kDa/28kDa/32kDa
实测分子量	36kDa
形式	Liquid
保存条件	Store at -20°C. Avoid freeze / thaw cycles. Buffer: PBS with 0.02% sodium azide,50% glycerol,pH7.3.
偶联物	Unconjugated
阳性对照	LO2,22Rv1,293T
细胞定位	Cell projection,Cytoplasm,Nucleus,Nucleus,Photoreceptor inner segment,cilium,cytosol,photoreceptor outer segment
纯化	Affinity purification

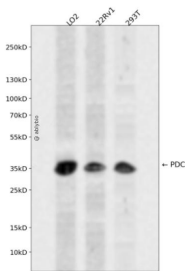
抗原信息

抗原信息	Recombinant fusion protein containing a sequence corresponding to amino acids 1-246 of human PDC (NP_002588.3).
序列	MEEAKSQSLEEDFEGQATHTGPKGVINDWRKFKLESQSDSIPPSKKEILRQMSSPQSRNGKDSKERVSRKMSIQEYELI HKEKEDENCLRKYRRQCMQDMHQKLSFGPRYGFVYELETGKQFLETIEKELKITTIVVHIYEDGIKGC DALNSSLTCLAAEYP IVKFKIKASNTGAGDRFSLDVLPTLLIYKGGELISNFISVAEQFAEEFFAGDVESFLNEYGLLPEREVHVLEHTKIEEEDVE

靶点信息

研究背景	This gene encodes a phosphoprotein, which is located in the outer and inner segments of the rod cells in the retina. This protein may participate in the regulation of visual phototransduction or in the integration of photoreceptor metabolism. It modulates the phototransduction cascade by interacting with the beta and gamma subunits of the retinal G-protein transducin. This gene is a potential candidate gene for retinitis pigmentosa and Usher syndrome type II. Alternatively spliced transcript variants encoding different isoforms have been identified.
基因ID	5132
基因名	PDC
Swiss	P20941
别名	PDC;MEKA;PHD;PhLOP;PhLP;phosducin

产品验证



Western blot analysis of PDC expressed in LO2, 22Rv1, 293T using PDC Rabbit pAb at 1:1000. Secondary antibody: HRP Goat Anti-Rabbit IgG (H+L) at 1:5000. Lysates/proteins: 30ug per lane. Blocking buffer: 5% non-fat dry milk in TBST. Detection: ECL Enhanced Kit. Exposure time: 120s.

实验步骤

访问官网浏览详情: www.ablybio.cn