

ABCC8 Rabbit pAb

货号: **AYP15983**

产品信息

反应	Mouse
宿主	Rabbit
克隆性	Polyclonal
预测反应	
应用	WB
推荐浓度	WB: 1:500 - 1:2000
理论分子量	5kDa/176kDa/177kDa
实测分子量	177kDa
形式	Liquid
保存条件	Store at -20°C. Avoid freeze / thaw cycles. Buffer: PBS with 0.02% sodium azide,50% glycerol,pH7.3.
偶联物	Unconjugated
阳性对照	Mouse pancreas
细胞定位	Membrane,Multi-pass membrane protein
纯化	Affinity purification

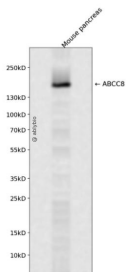
抗原信息

抗原信息	Recombinant fusion protein containing a sequence corresponding to amino acids 700-1000 of human ABC C8 (NP_000343.2).
序列	TIRIPRGQLTMIVGQVCGKSSLLLAALGEMQKVS GAVFWSSLPDSEIGEDPSPERETATDLDIRKRGPVAYASQKPWLLN ATVEENIIFESPFNKQRYKMVIEACSLQPDIDILPHGDQTQIGERGINLSGGQRQRISVARALYQHANVVFLDDPFSALDIHL SDHLMQAGILELLRDDKRTVVLVTHKLQYLPHADWIIAMKDGTIQREGTLKDFQRSECQLFEHWKTLMNRQDQELEKETV TERKATEPPQGLSRAMSSRDGLLQDEEEEEEEAAESEEDNLSSMLHQRAEIPWRAC

靶点信息

研究背景	The protein encoded by this gene is a member of the superfamily of ATP-binding cassette (ABC) transporters. ABC proteins transport various molecules across extra- and intra-cellular membranes. ABC genes are divided into seven distinct subfamilies (ABC1, MDR/TAP, MRP, ALD, OABP, GCN20, White). This protein is a member of the MRP subfamily which is involved in multi-drug resistance. This protein functions as a modulator of ATP-sensitive potassium channels and insulin release. Mutations and deficiencies in this protein have been observed in patients with hyperinsulinemic hypoglycemia of infancy, an autosomal recessive disorder of unregulated and high insulin secretion. Mutations have also been associated with non-insulin-dependent diabetes mellitus type II, an autosomal dominant disease of defective insulin secretion. Alternatively spliced transcript variants have been found for this gene.
基因ID	6833
基因名	ABCC8
Swiss	Q09428
别名	ABCC8;ABC36;HHF1;HI;HRINS;MRP8;PHHI;SUR;SUR1;SUR1delta2;TNDM2

产品验证



Western blot analysis of ABCC8 expressed in Mouse pancreas using ABCC8 Rabbit pAb at 1:1000. Second ary antibody: HRP Goat Anti-Rabbit IgG (H+L) at 1:5000. Lysates/proteins: 30ug per lane. Blocking buffer: 5% non-fat dry milk in TBST. Detection: ECL Enhanced Kit. Exposure time: 120s.

实验步骤

访问官网浏览详情: www.ablybio.cn