

# GBF1 Rabbit pAb

货号: **AYP15978**

## 产品信息

反应	Human,Mouse
宿主	Rabbit
克隆性	Polyclonal
预测反应	
应用	WB IF/ICC
推荐浓度	<b>WB:</b> 1:500 - 1:2000 <b>IF/ICC:</b> 1:50 - 1:200
理论分子量	206kDa
实测分子量	260kDa
形式	Liquid
保存条件	Store at -20°C. Avoid freeze / thaw cycles. Buffer: PBS with 0.02% sodium azide,50% glycerol,pH7.3.
偶联物	Unconjugated
阳性对照	Mouse heart
细胞定位	Cytoplasm,Endoplasmic reticulum-Golgi intermediate compartment,Golgi apparatus,Lipid droplet,Membrane,Peripheral membrane protein,cis-Golgi network,trans-Golgi network
纯化	Affinity purification

## 抗原信息

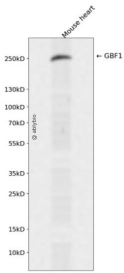
抗原信息	Recombinant fusion protein containing a sequence corresponding to amino acids 1-85 of human GBF1 (NP_004184.1).
序列	MVDKNIYIIQGEINIVVGAIKRNARWSTHTPLDEERDPLLHSFGHLKEVLNSITELSEIEPNVFLRPFLEVRSEDTTGPITGLA

## 靶点信息

研究背景	This gene encodes a member of the Sec7 domain family. The encoded protein is a guanine nucleotide exchange factor that regulates the recruitment of proteins to membranes by mediating GDP to GTP exchange. The encoded protein is localized to the Golgi apparatus and plays a role in vesicular trafficking by activating ADP ribosylation factor 1. The encoded protein has also been identified as an important host factor for viral replication. Multiple transcript variants have been observed for this gene.
------	---

基因ID	8729
基因名	GBF1
Swiss	Q92538
别名	GBF1;ARF1GEF

## 产品验证



Western blot analysis of GBF1 expressed in Mouse heart using GBF1 Rabbit pAb at 1:1000. Secondary anti body: HRP Goat Anti-Rabbit IgG (H+L) at 1:5000. Lysates/proteins: 30ug per lane. Blocking buffer: 5% no n-fat dry milk in TBST. Detection: ECL Enhanced Kit. Exposure time: 120s.

## 实验步骤

访问官网浏览详情: [www.ablybio.cn](http://www.ablybio.cn)